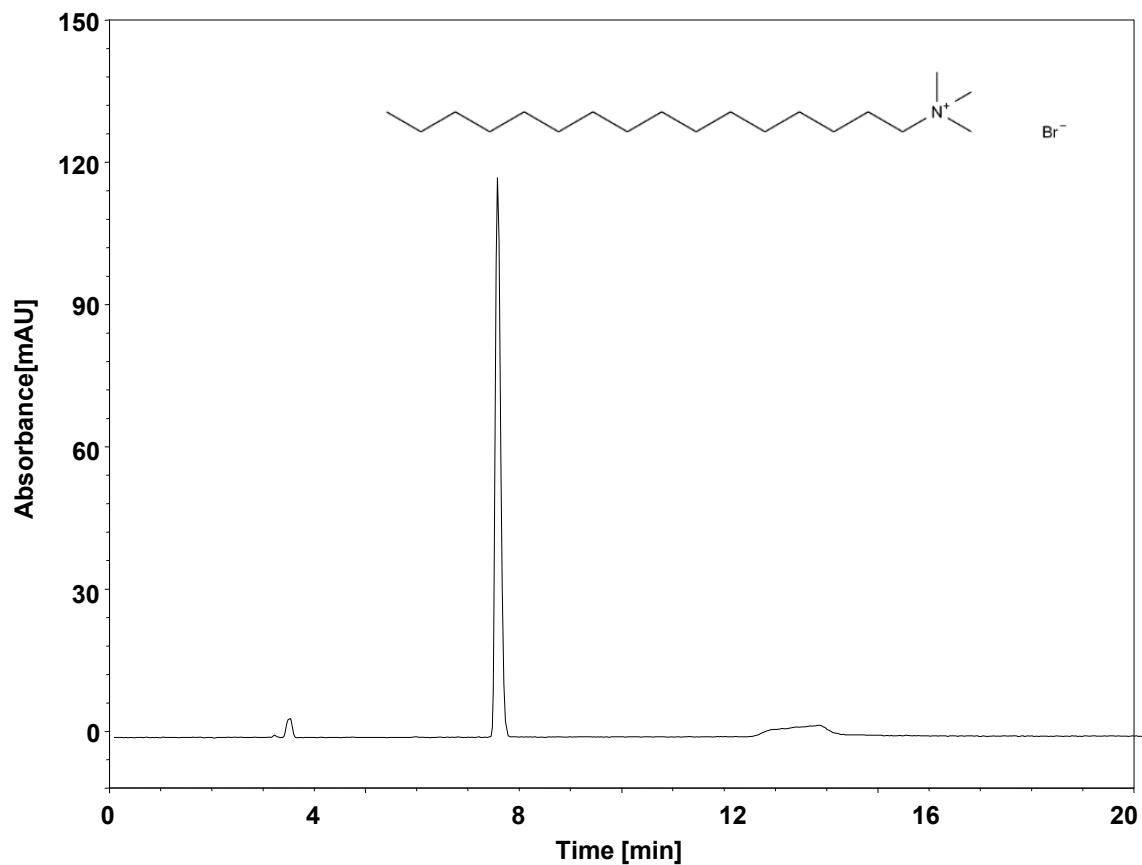


十六烷基三甲基溴化铵



Column: ChromCore 300 C4-T, 5 μ m

Dimension: 4.6 \times 250 mm

Mobile Phase: A) 0.1% 三氟乙酸水

B) 0.1% 三氟乙酸乙腈

Gradient: t (min) %A %B

0 60 40

20 20 80

20.1 60 40

35 60 40

Flow Rate: 1.0 mL/min

Temperature: 30 $^{\circ}$ C

Injection: 10 μ L

Detection: ELSD Evap:65 $^{\circ}$ C, Neb:55 $^{\circ}$ C, Gas:1.6SLM

Instrument: Agilent 1260

Sample: CTAB