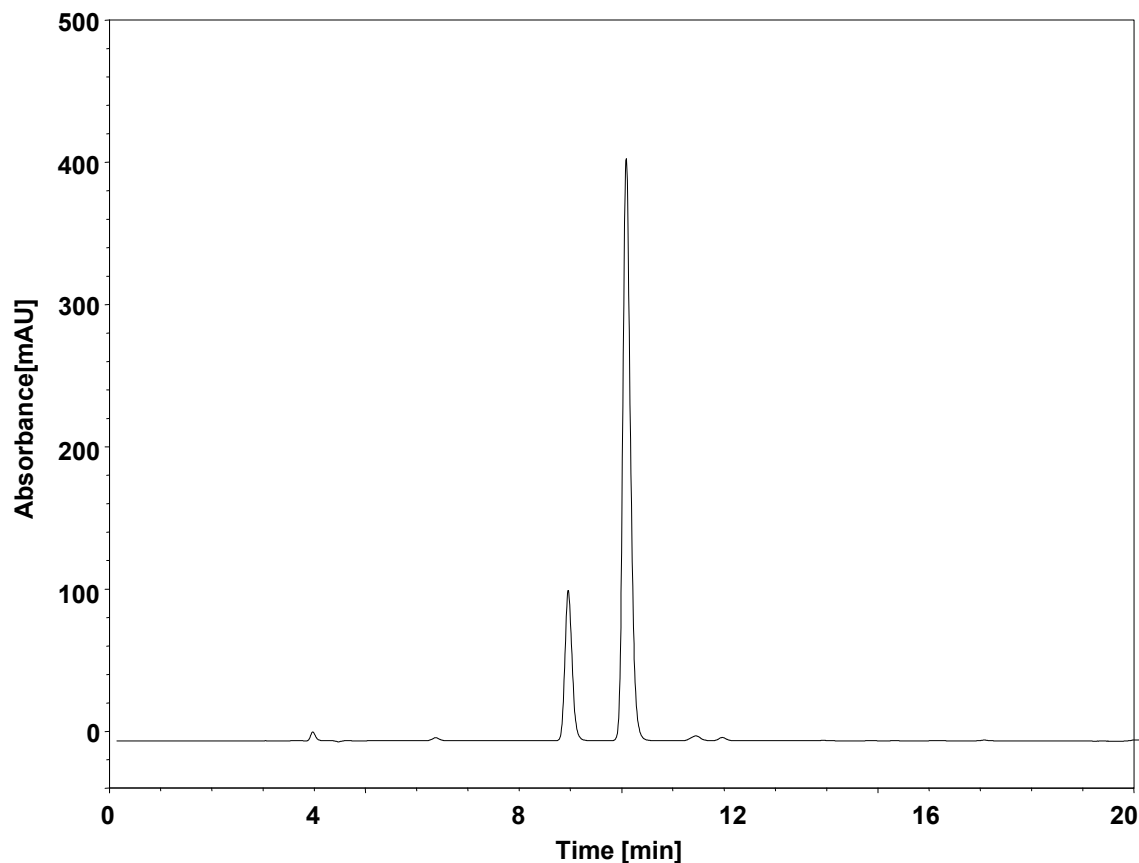


尿酸衍生物



Column: ChromCore Biphenyl, 5 μ m
Dimension: 4.6 \times 250 mm
Mobile Phase: A) 20 mM醋酸铵溶液, pH4.0
B) 甲醇
Gradient: t (min) %A %B
0 95 5
20 75 25
20.1 95 5
Flow Rate: 1.0 mL/min
Temperature: 30 $^{\circ}$ C
Injection: 5 μ L
Detection: UV 254 nm
Instrument: 岛津LC-2030C
Sample: 尿酸衍生物 (1 mg/mL)

组分	保留时间 (min)	理论塔板数 (USP)	拖尾因子 (USP)	分离度 (USP)
1	8.837	18000	1.172	/
2	9.973	20263	1.124	4.176