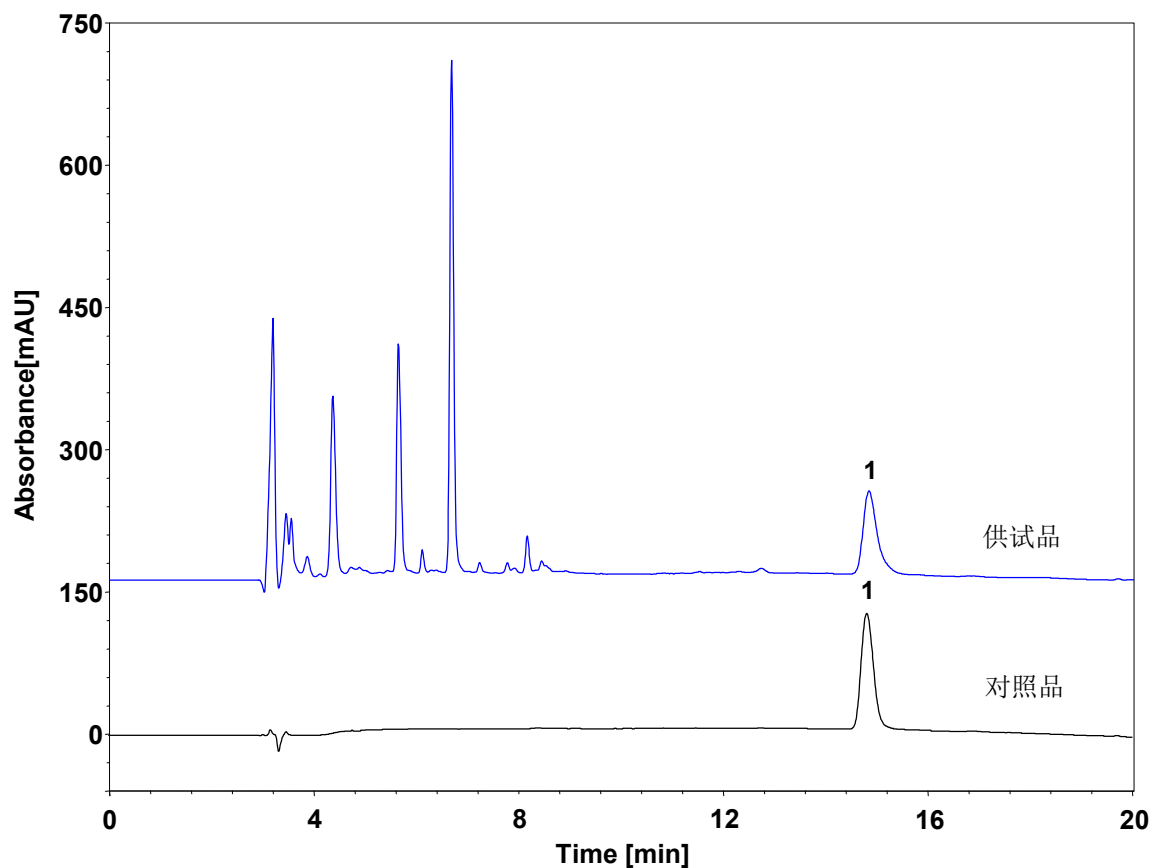


细胞培养液中蛋白



Column: ChromCore 300 C18, 5 μm
Dimension: 4.6 \times 250 mm
Mobile Phase: A) 0.1% 三氟乙酸水
B) 0.1% 三氟乙酸乙腈

Gradient:	t (min)	%A	%B
	0	95	5
	20	5	95
	20.1	95	5
	35	95	5

Flow Rate: 1.0 mL/min
Temperature: 50 $^{\circ}\text{C}$
Injection: 10 μL
Detection: UV 214 nm
Instrument: 岛津LC-2030C
Sample: 细胞培养液
Peak: 1. 蛋白