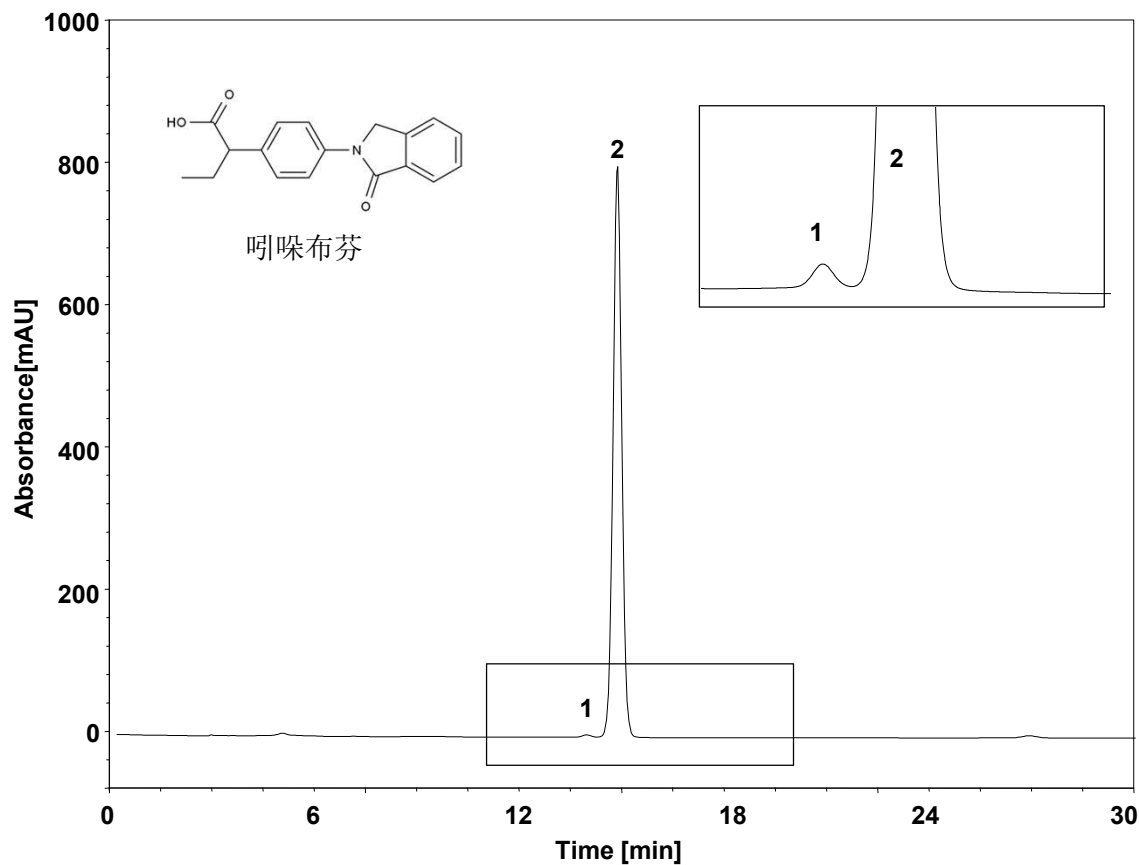


# 吲哚布芬片



Column: ChromCore AR C18, 5  $\mu$ m  
Dimension: 4.6  $\times$  250 mm  
Mobile Phase: 60/40/0.5 v/v/v 甲醇/水/三乙胺, 磷酸调pH3.0  
Flow Rate: 1.0 mL/min  
Temperature: 30  $^{\circ}$ C  
Injection: 10  $\mu$ L  
Detection: UV 228 nm  
Instrument: Agilent 1260  
Sample: 吲哚布芬  
Peaks: 1. 杂质 I  
2. 吲哚布芬

组分	保留时间 (min)	理论塔板数 (USP)	拖尾因子 (USP)	分离度 (USP)
吲哚布芬	14.742	15590	1.02	1.89