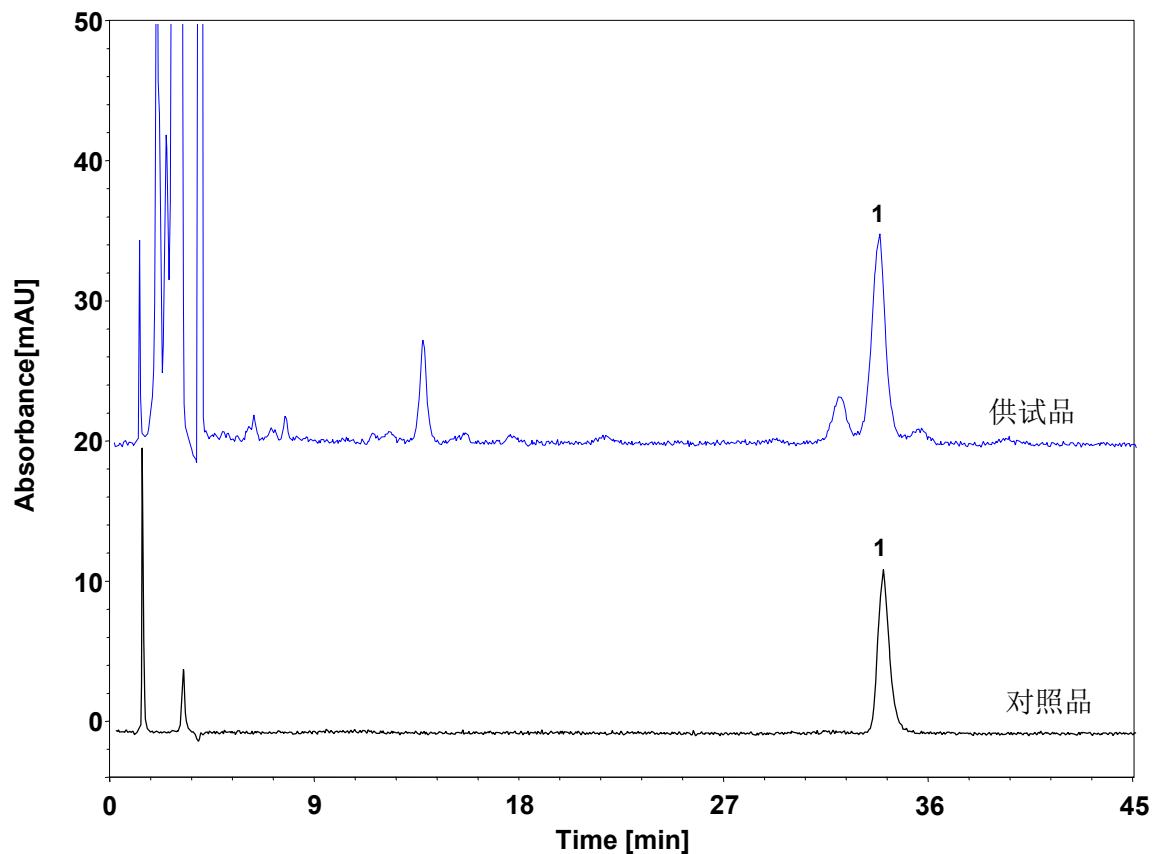


桔梗 (中国药典)



Column: ChromCore AR C18, 5 μ m
Dimension: 4.6 \times 250 mm
Mobile Phase: 25/75 v/v 乙腈/水
Flow Rate: 1.0 mL/min
Temperature: 30 $^{\circ}$ C
Injection: 10 μ L
Detection: ELSD: Evap:65 $^{\circ}$ C, Neb:55 $^{\circ}$ C, Gas:1.6 SLM
Instrument: Agilent 1260
Sample: 桔梗
Peak: 1. 桔梗皂苷D

组分	保留时间 (min)	理论塔板数 (USP)	拖尾因子 (USP)	分离度 (USP)
桔梗皂苷D	33.688	15224	0.934	1.6

