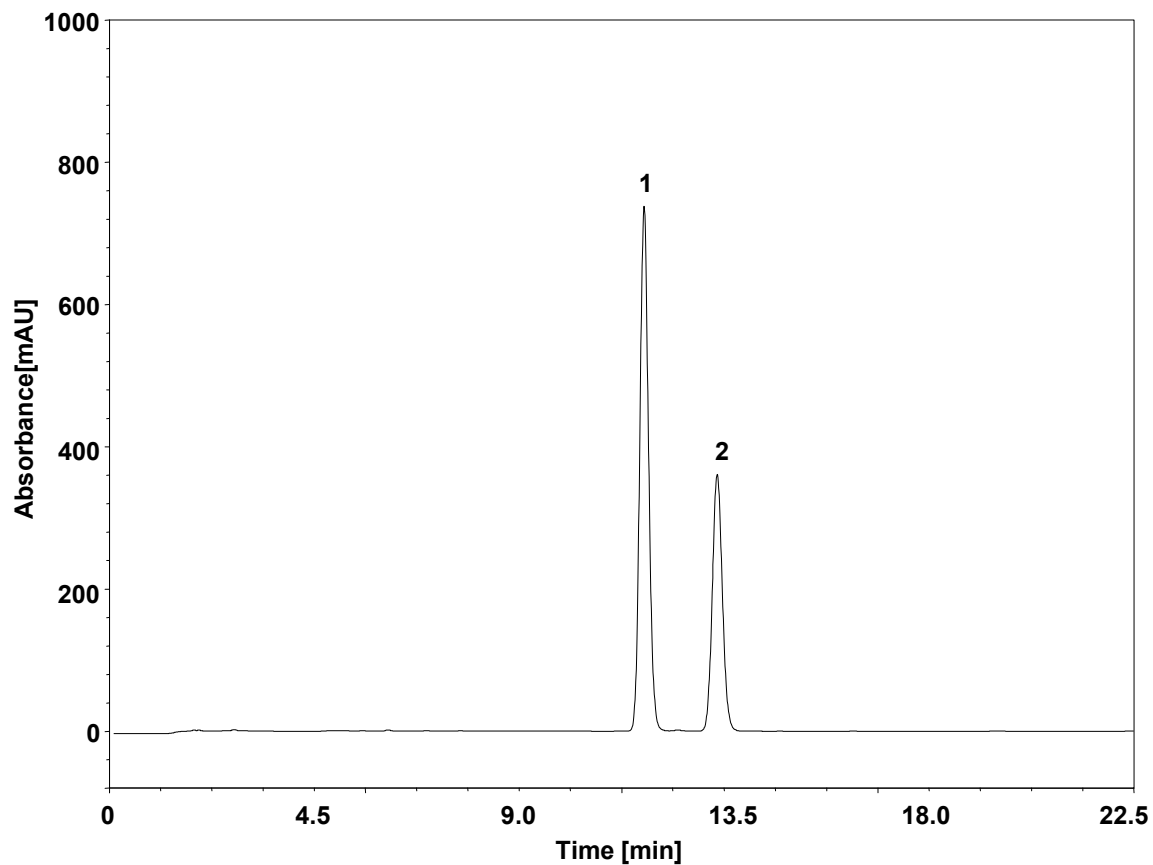


腐霉利与异菌脲



Column: ChromCore 120 C18, 5 μ m
Dimension: 4.6 \times 250 mm
Mobile Phase: 70/30 v/v 甲醇/水
Flow Rate: 1.0 mL/min
Temperature: 30 $^{\circ}$ C
Injection: 5 μ L
Detection: UV 220 nm
Instrument: 岛津LC-2030C
Sample: 腐霉利与异菌脲
Peaks: 1. 腐霉利
2. 异菌脲

组分	保留时间 (min)	理论塔板数 (USP)	拖尾因子 (USP)	分离度 (USP)
腐霉利	11.684	17004	1.084	/
异菌脲	13.292	16814	1.076	4.186