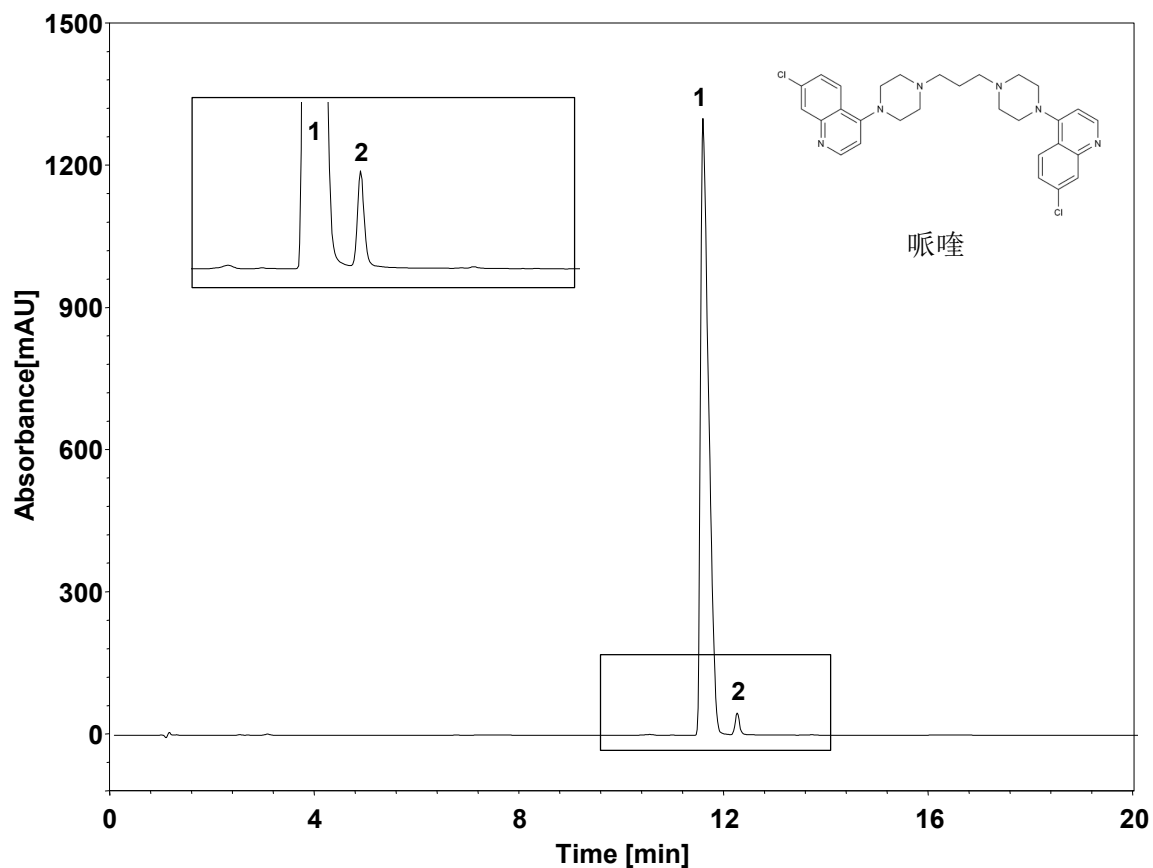


双氢青蒿素磷酸哌喹片



Column: ChromCore 120 C18, 3 μ m

Dimension: 4.6 \times 100 mm

Mobile Phase: A) 0.1% 三氟乙酸水

B) 0.05% 三氟乙酸乙腈

Gradient:	t (min)	%A	%B
	0	91	9
	5	91	9
	16	80	20
	20	75	25
	20.1	91	9
	27	91	9

Flow Rate: 1.4 mL/min

Temperature: 40 $^{\circ}$ C

Injection: 20 μ L

Detection: UV 240 nm

Instrument: Waters 2695

Sample: 磷酸哌喹 (磷酸哌喹 320 μ g/mL, 杂质E 5 μ g/mL)

Peaks:
1. 磷酸哌喹
2. 杂质E

组分	保留时间 (min)	理论塔板数 (USP)	拖尾因子 (USP)	分离度 (USP)
磷酸哌喹	11.520	212155	1.73	/
杂质E	12.185	99052	1.12	2.79