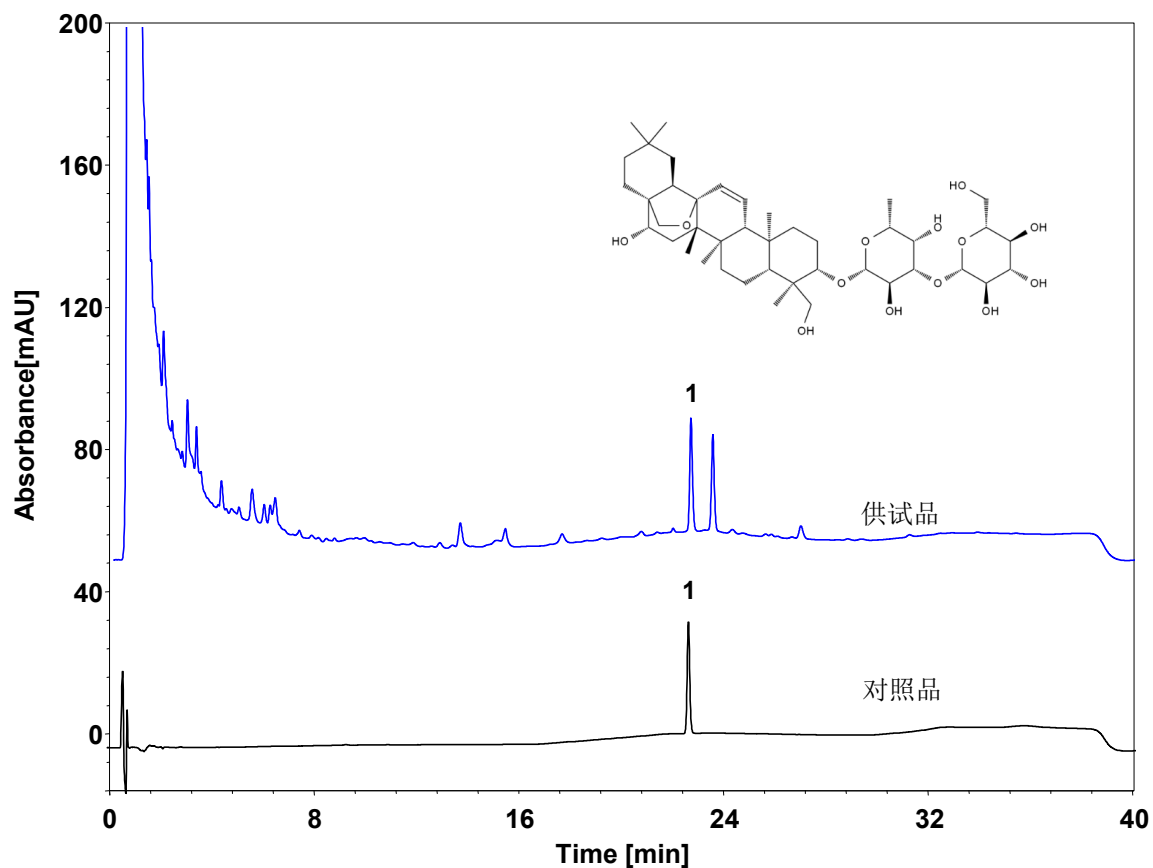


北柴胡配方颗粒



Column: ChromCore AQ C18, 1.8 μ m

Dimension: 2.1 \times 100 mm

Mobile Phase: A) 水
B) 乙腈

Gradient:	t (min)	%A	%B
	0	75	25
	8	72	28
	15	71	29
	20	64	36
	28	64	36
	31	60	40
	37	60	40
	37.1	75	25
	47	75	25

Flow Rate: 0.4 mL/min

Temperature: 35 $^{\circ}$ C

Injection: 3 μ L

Detection: UV 211 nm

Instrument: Agilent 1290

Sample: 北柴胡配方颗粒

Peak: 1. 柴胡皂苷a

组分	保留时间 (min)	理论塔板数 (USP)	拖尾因子 (USP)	分离度 (USP)
柴胡皂苷a	22.630	214206	1.12	4.30