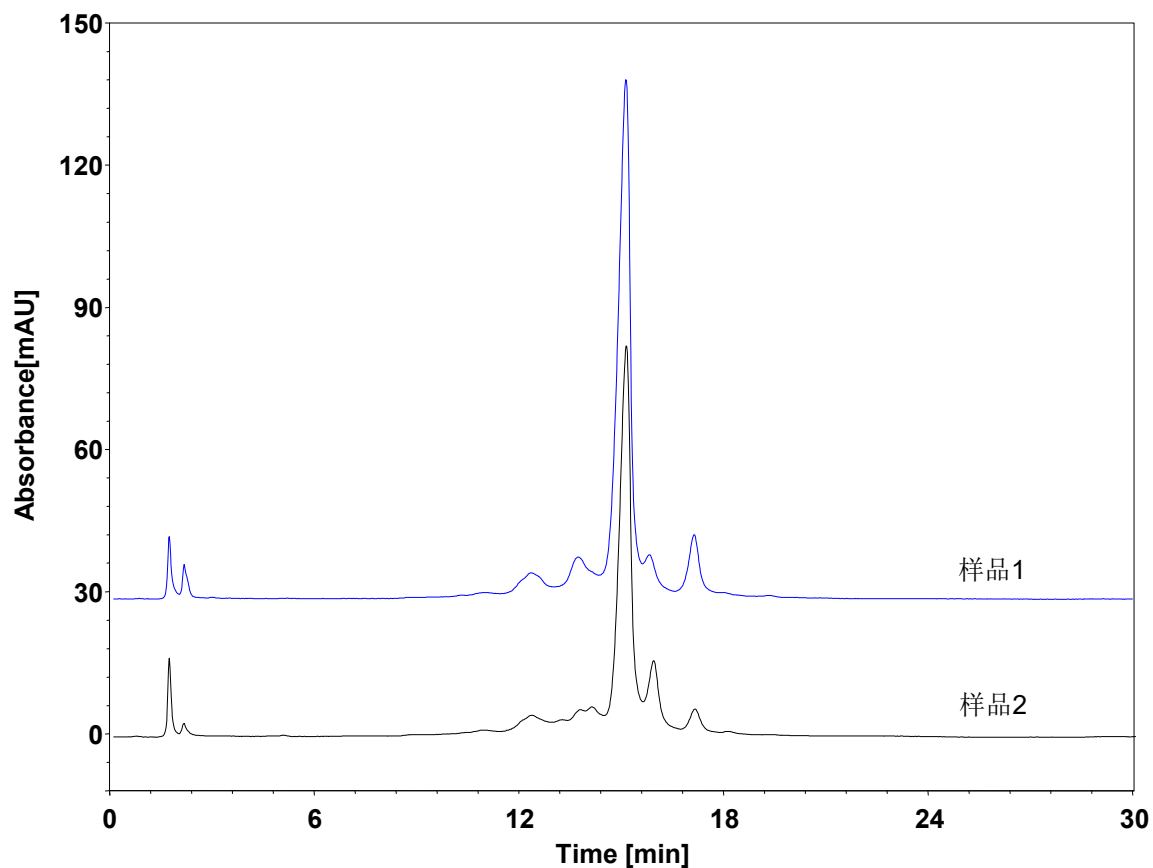


抗体-离子交换



Column: BioCore WCX, 10 μ m
Dimension: 4.6 \times 250 mm
Mobile Phase: A) 2 mM NaCl in 20 mM MES, pH6.5
B) 150 mM NaCl in 20 mM MES, pH6.5

Gradient:

t (min)	%A	%B
0	95	5
2	95	5
25	65	35
26	50	50
30	20	80
31	95	5

Flow Rate: 0.8 mL/min
Temperature: 35 $^{\circ}$ C
Injection: 50 μ L
Detection: UV 280 nm
Instrument: Waters 2695
Sample: 抗体 (1 mg/mL流动相A溶解)