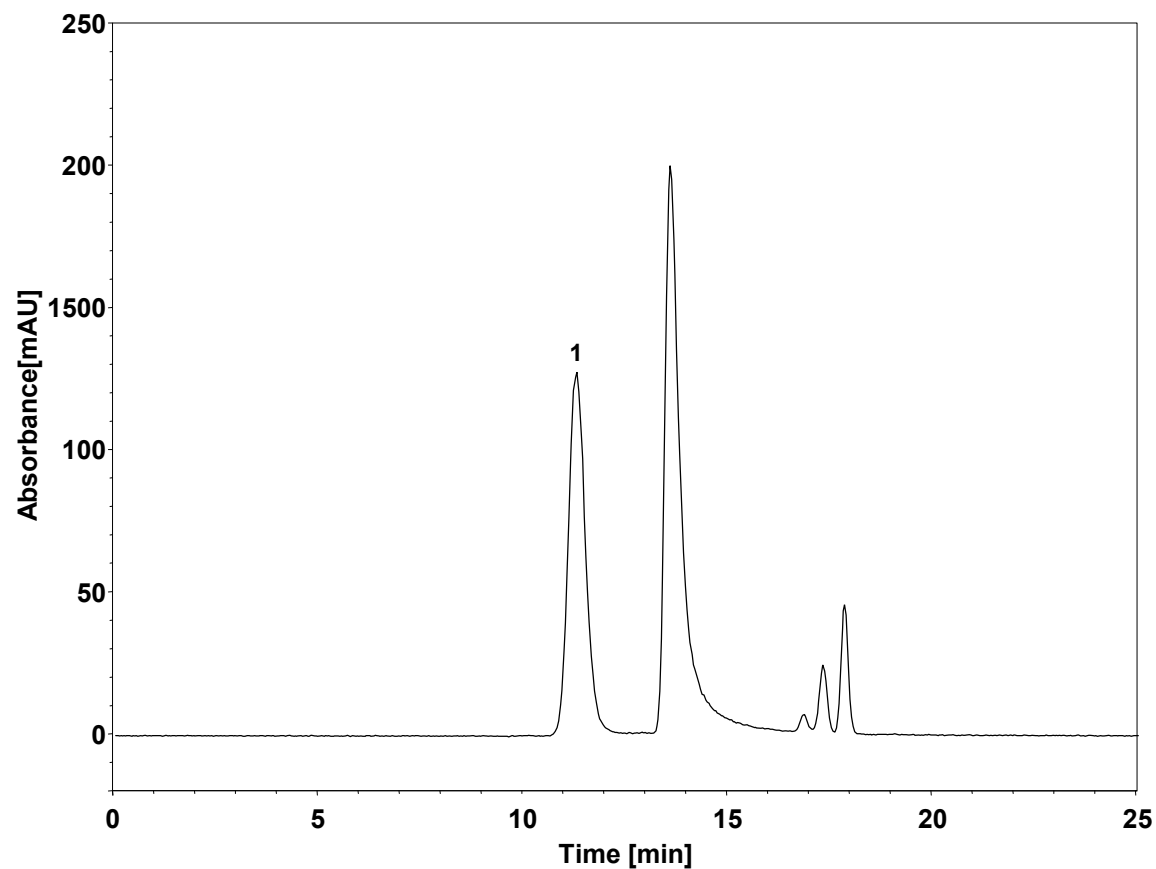


泊洛沙姆-体积排阻



Column: BioCore SEC-120, 5 μm
Dimension: 7.8 \times 300 mm
Mobile Phase: 10/90 v/v Isopropanol/50 mM ammonium acetate, pH5.2
Flow Rate: 0.6 mL/min
Temperature: 25 $^{\circ}\text{C}$
Injection: 2 μL
Detection: ELSD: Evap:65 $^{\circ}\text{C}$, Neb:55 $^{\circ}\text{C}$, Gas:1.6 SLM
Instrument: Agilent 1260
Sample: 泊洛沙姆
Peak: 1. 泊洛沙姆