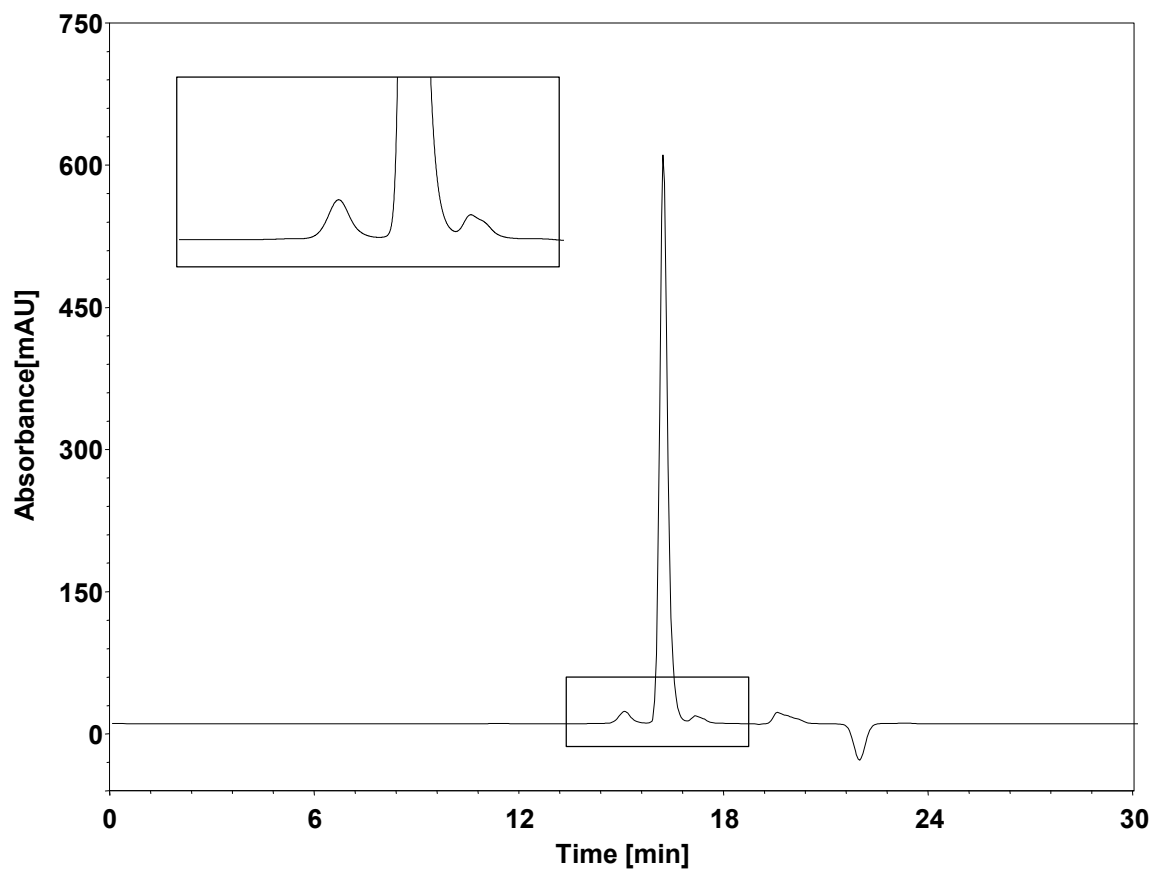


胆固醇修饰片段-体积排阻



Column: BioCore SEC-150, 5 μm
Dimension: 7.8 \times 300 mm
Mobile Phase: 50/50/0.1 v/v/v MeCN/water/TFA
Flow Rate: 0.5 mL/min
Temperature: 30 $^{\circ}\text{C}$
Injection: 10 μL
Detection: UV 210 nm
Instrument: Agilent 1260
Sample: 胆固醇修饰片段 (1 mg/mL)