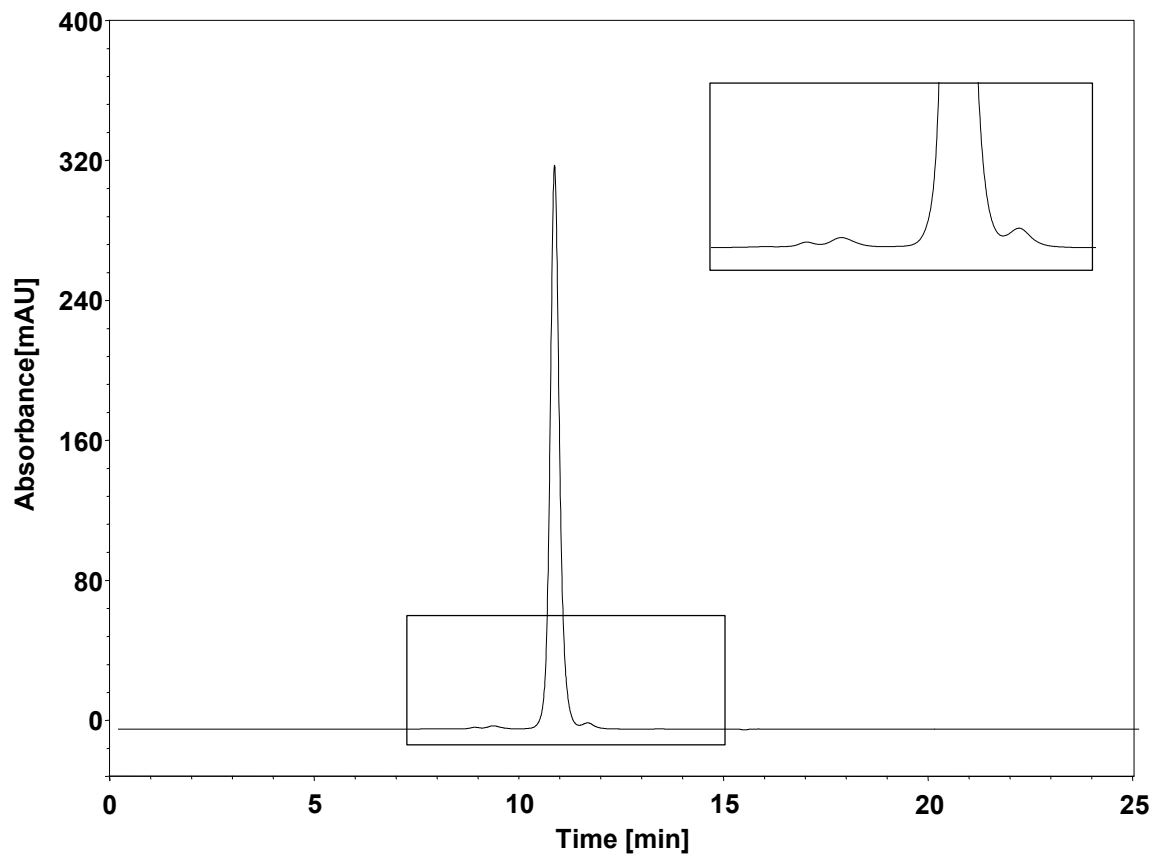


双抗-体积排阻



Column: BioCore SEC-300, 1.8 μm
Dimension: 4.6 \times 300 mm
Mobile Phase: 100 mM Na_2SO_4 in 50 mM phosphate buffer, pH6.8
Flow Rate: 0.25 mL/min
Temperature: 30 $^\circ\text{C}$
Injection: 10 μL
Detection: UV 214 nm
Instrument: Agilent 1290 Infinity II (Bio)
Sample: 双抗