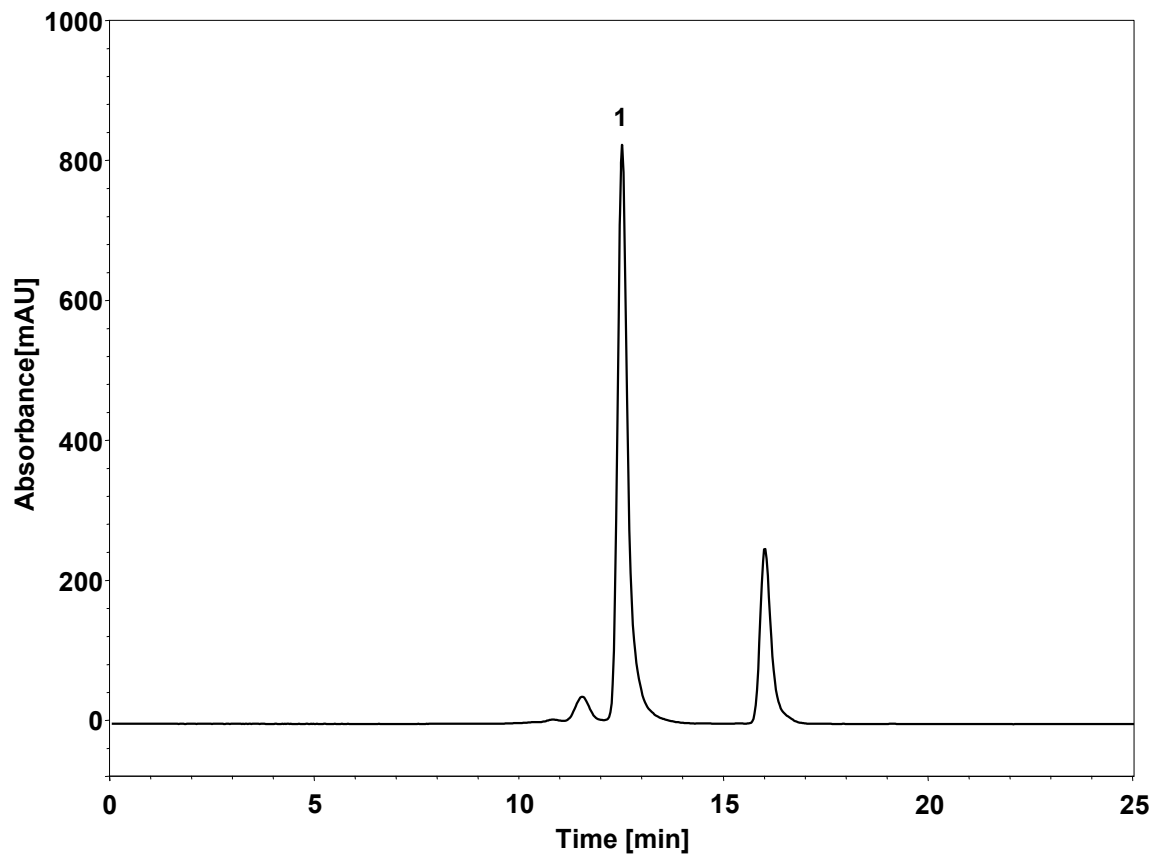


BSA-体积排阻



Column: BioCore SEC-300, 5 μ m
Dimension: 4.6 \times 300 mm
Mobile Phase: 0.3 M NaCl in 50 mM phosphate buffer, pH6.8
Flow Rate: 0.26 mL/min
Temperature: 25 $^{\circ}$ C
Injection: 10 μ L
Detection: UV 214 nm
Instrument: Thermo Fisher Scientific Vanquish
Sample: BSA
Peak: 1. BSA