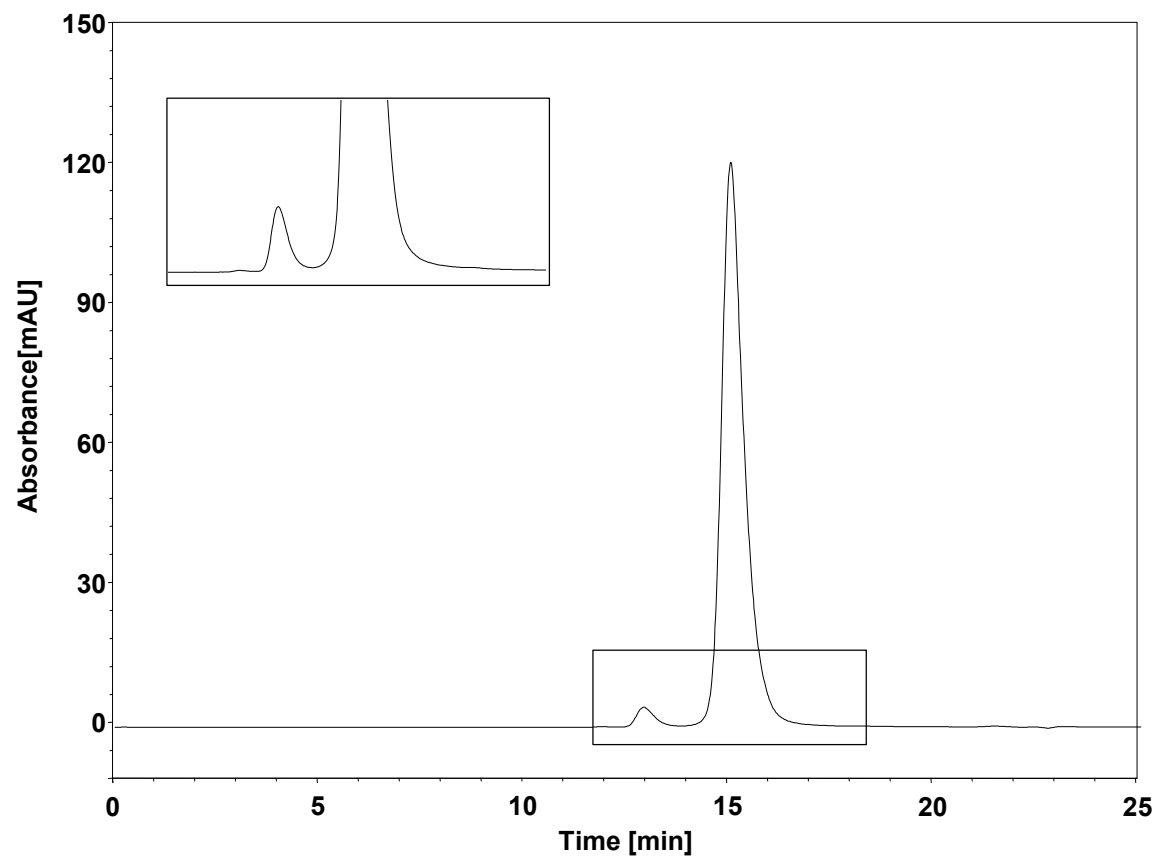


FC融合蛋白-体积排阻



Column: BioCore SEC-300, 3 μ m
Dimension: 7.8 \times 300 mm
Mobile Phase: 100 mM phosphate buffer, pH7.0
Flow Rate: 0.5 mL/min
Temperature: 30 $^{\circ}$ C
Injection: 2 μ L
Detection: UV 280 nm
Instrument: Waters 2695
Sample: FC融合蛋白 (25 mg/mL)