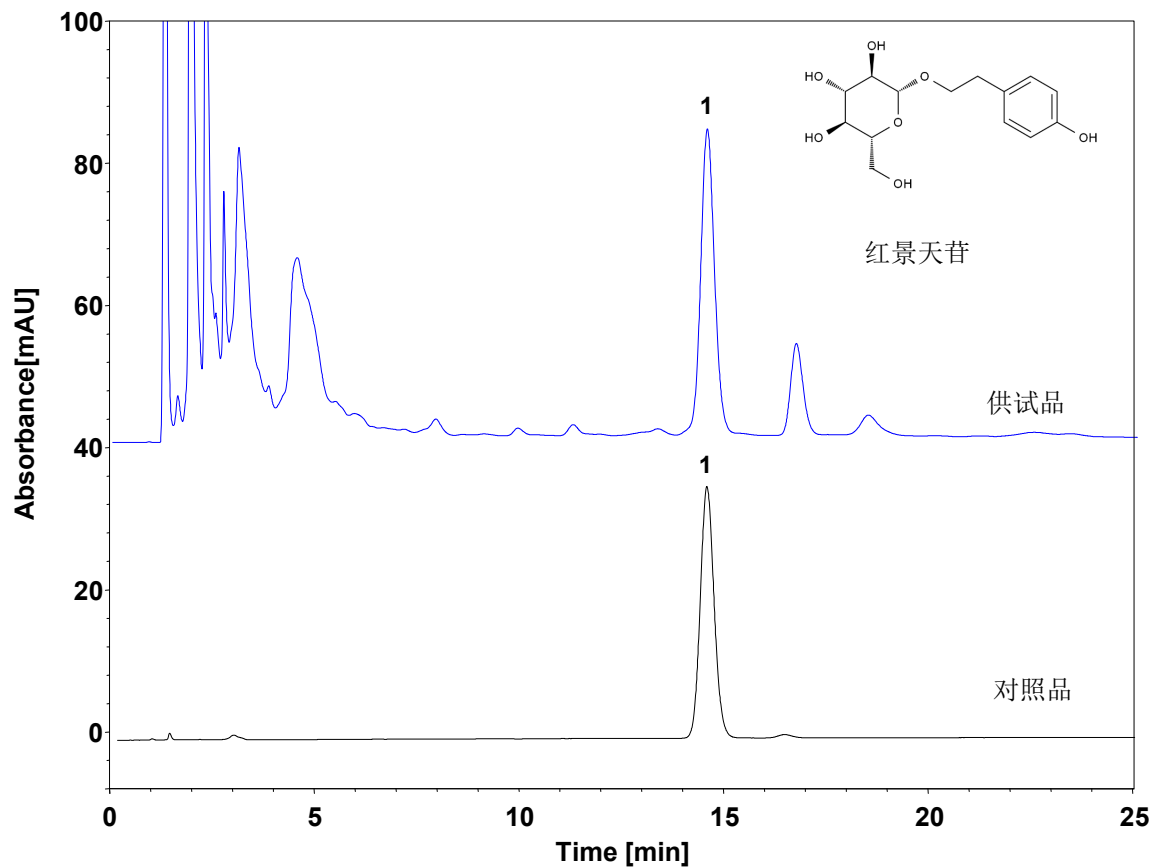


# 红景天 (中国药典)



Column: Ecopak 120 C18 Plus, 5  $\mu$ m  
Dimension: 4.6  $\times$  250 mm  
Mobile Phase: 15/85 v/v 甲醇/水  
Flow Rate: 1.0 mL/min  
Temperature: 25  $^{\circ}$ C  
Injection: 5  $\mu$ L  
Detection: UV 275 nm  
Instrument: 岛津 LC-2030C  
Sample: 红景天  
Peak: 1. 红景天苷

组分	保留时间 (min)	理论塔板数 (USP)	拖尾因子 (USP)	分离度 (USP)
红景天苷	14.486	8592	1.101	/