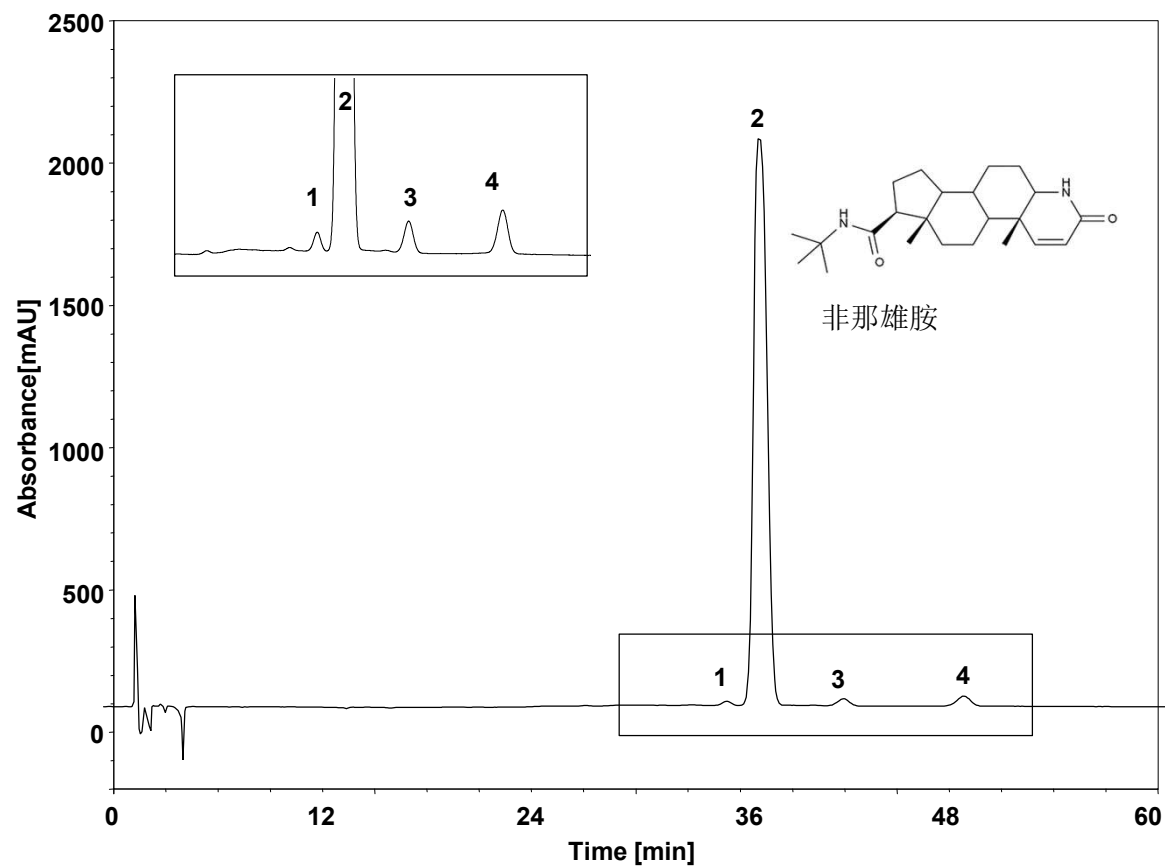


非那雄胺 (EP)



Column: ChromCore Polar C18, 5 μm
Dimension: 4.6 \times 250 mm
Mobile Phase: 10/10/80 v/v/v 乙腈/四氢呋喃/水
Flow Rate: 1.5 mL/min
Temperature: 60 $^{\circ}\text{C}$
Injection: 50 μL
Detection: UV 210 nm
Instrument: 岛津 LC-2030C
Sample: 非那雄胺
Peaks:
1. 杂质
2. 非那雄胺
3~4. 杂质