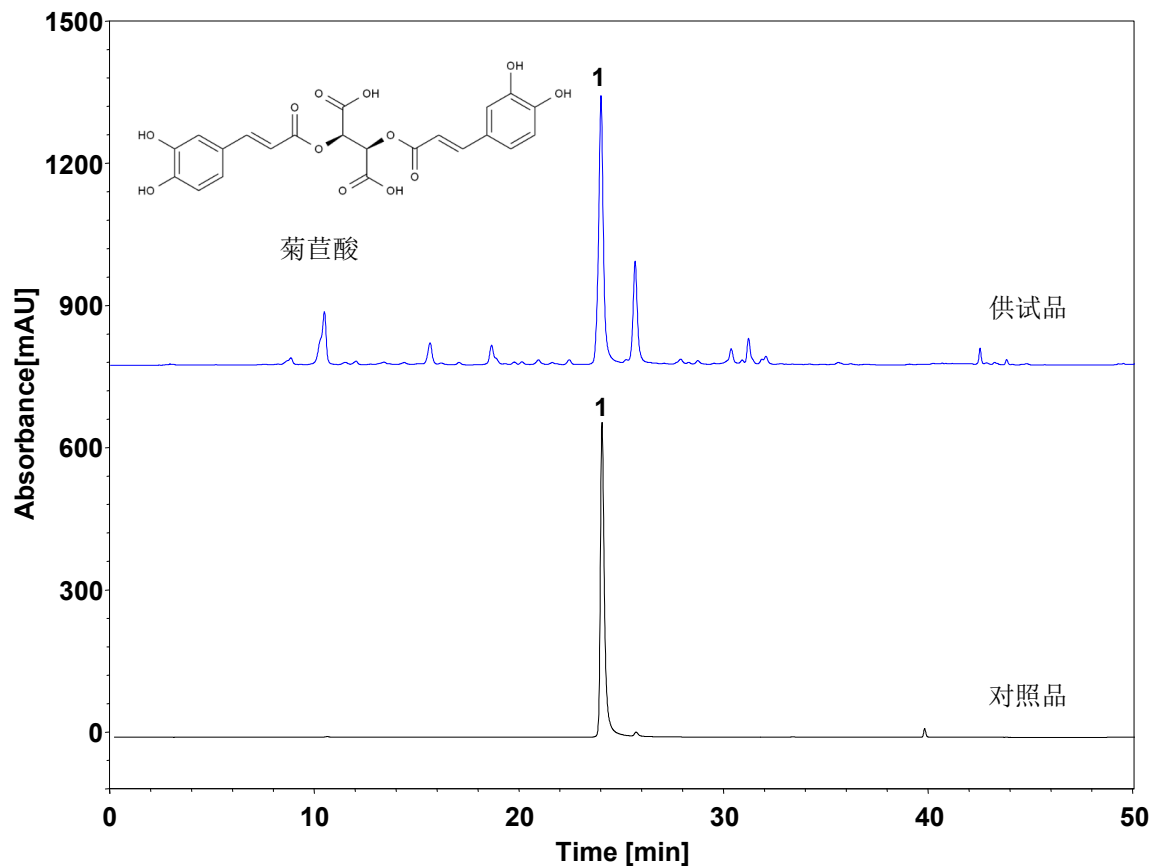


# 蒲公英 (中国药典2020)



Column: ChromCore 120 C18, 5  $\mu$ m

Dimension: 4.6  $\times$  250 mm

Mobile Phase: A) 甲醇  
B) 0.1%甲酸水溶液

Gradient:

t (min)	%A	%B
0	13	87
7	20	80
18	30	70
28	41	59
35	45	55
38	62	38
45	69	31
50	95	5

Flow Rate: 1.0 mL/min

Temperature: 30  $^{\circ}$ C

Injection: 10  $\mu$ L

Detection: UV 327 nm

Instrument: 岛津 LC-2030C

Sample: 蒲公英

Peak: 1. 菊苣酸

组分	保留时间 (min)	理论塔板数 (USP)	拖尾因子 (USP)	分离度 (USP)
菊苣酸	23.955	56849	1.11	/