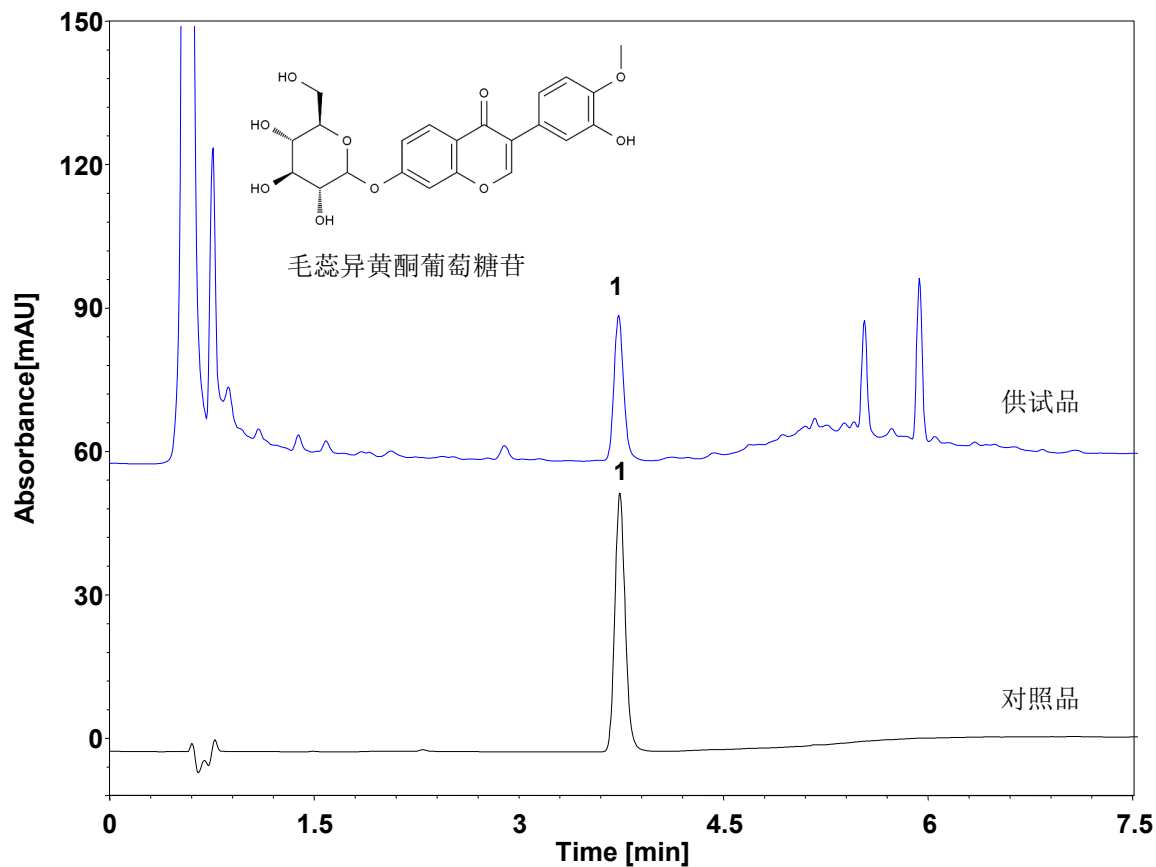


# 黄芪配方颗粒 (含量测定)



Column: ChromCore 120 C18, 1.8  $\mu$ m  
 Dimension: 2.1  $\times$  100 mm  
 Mobile Phase: A) 乙腈  
 B) 0.2% 甲酸水溶液

Gradient:

t (min)	%A	%B
0	16	84
2.5	16	84
4	40	60
6.5	40	60
6.51	16	84
15	16	84

Flow Rate: 0.4 mL/min  
 Temperature: 30  $^{\circ}$ C  
 Injection: 1  $\mu$ L  
 Detection: UV 260 nm  
 Instrument: Agilent 1290  
 Sample: 黄芪配方颗粒  
 Peak: 1. 毛蕊异黄酮葡萄糖苷

组分	保留时间 (min)	理论塔板数 (USP)	拖尾因子 (USP)	分离度 (USP)
毛蕊异黄酮葡萄糖苷	3.717	11249	1.14	/