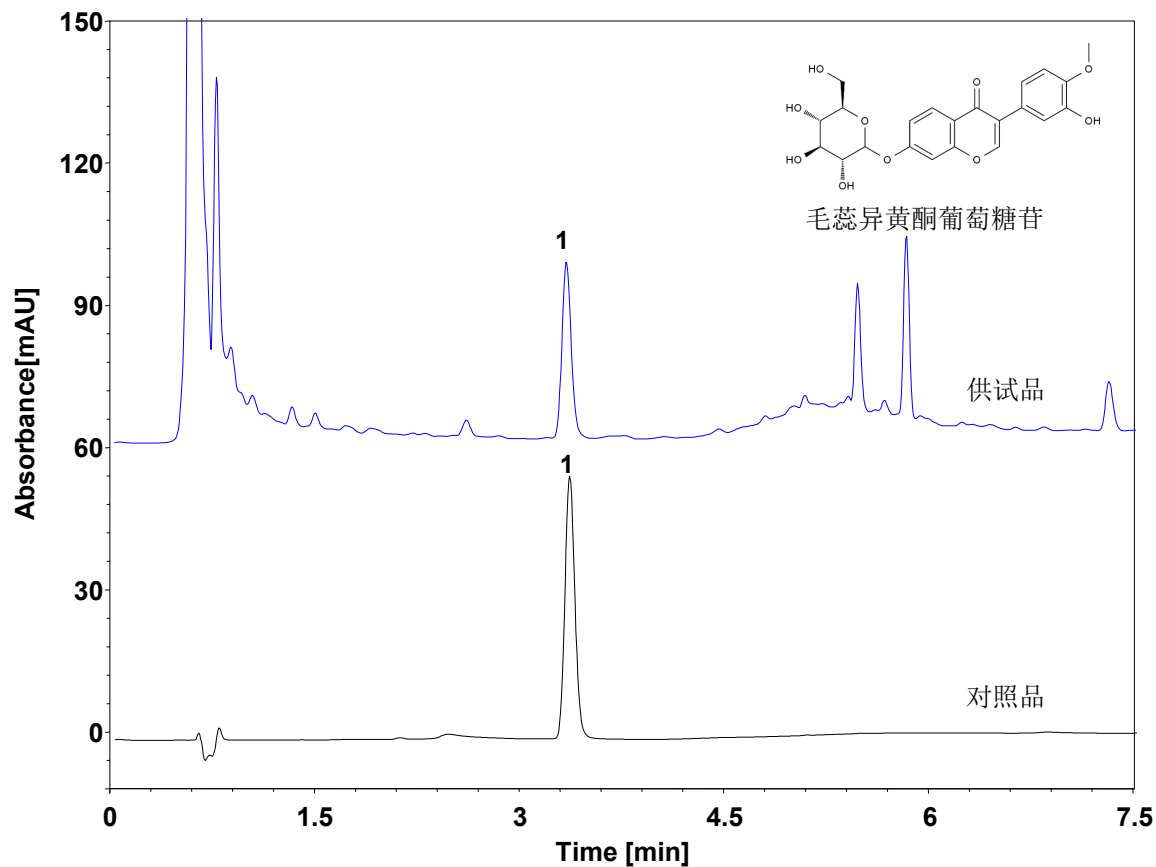


黄芪配方颗粒 (含量测定)



Column: ChromCore AQ C18, 1.8 μ m

Dimension: 2.1 \times 100 mm

Mobile Phase: A) 乙腈

B) 0.2% 甲酸水溶液

Gradient:	t (min)	%A	%B
	0	16	84
	2.5	16	84
	4	40	60
	6.5	40	60
	6.51	16	84
	15	16	84

Flow Rate: 0.4 mL/min

Temperature: 30 $^{\circ}$ C

Injection: 1 μ L

Detection: UV 260 nm

Instrument: Agilent 1290

Sample: 黄芪配方颗粒

Peak: 1. 毛蕊异黄酮葡萄糖苷

组分	保留时间 (min)	理论塔板数 (USP)	拖尾因子 (USP)	分离度 (USP)
毛蕊异黄酮葡萄糖苷	3.323	11037	1.18	/