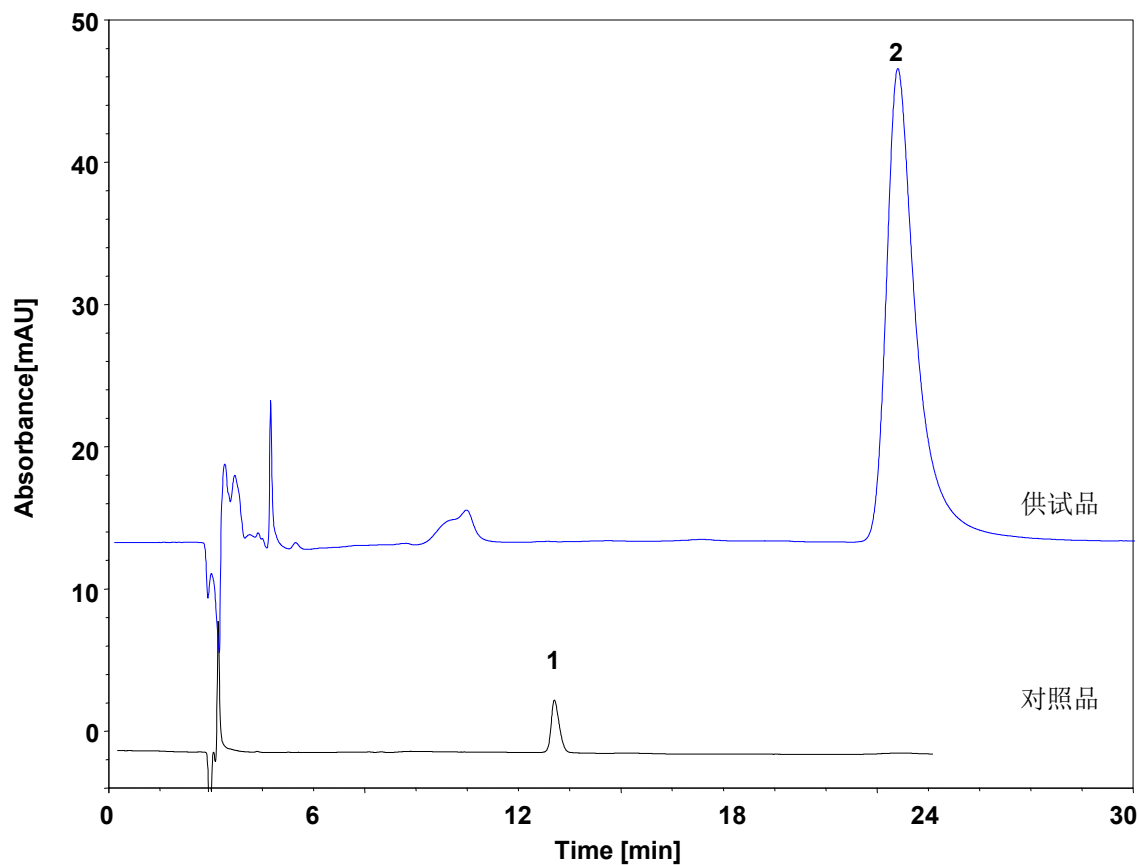
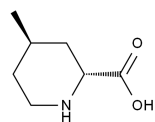


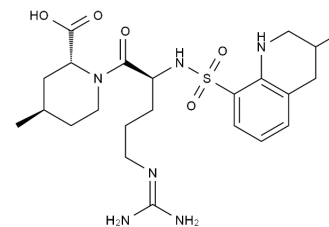
阿加曲班注射液



Column: ChromCore C18, 5 μ m
Dimension: 4.6 \times 250 mm
Mobile Phase: 50 mM磷酸二氢钠溶液, pH2.2
Flow Rate: 1.0 mL/min
Temperature: 35 $^{\circ}$ C
Injection: 10 μ L
Detection: UV 210 nm
Instrument: 岛津 LC-2030C
Sample: 阿加曲班注射液
Peaks: 1. 4-甲基-2-哌啶甲酸
2. 阿加曲班



4-甲基-2-哌啶甲酸



阿加曲班