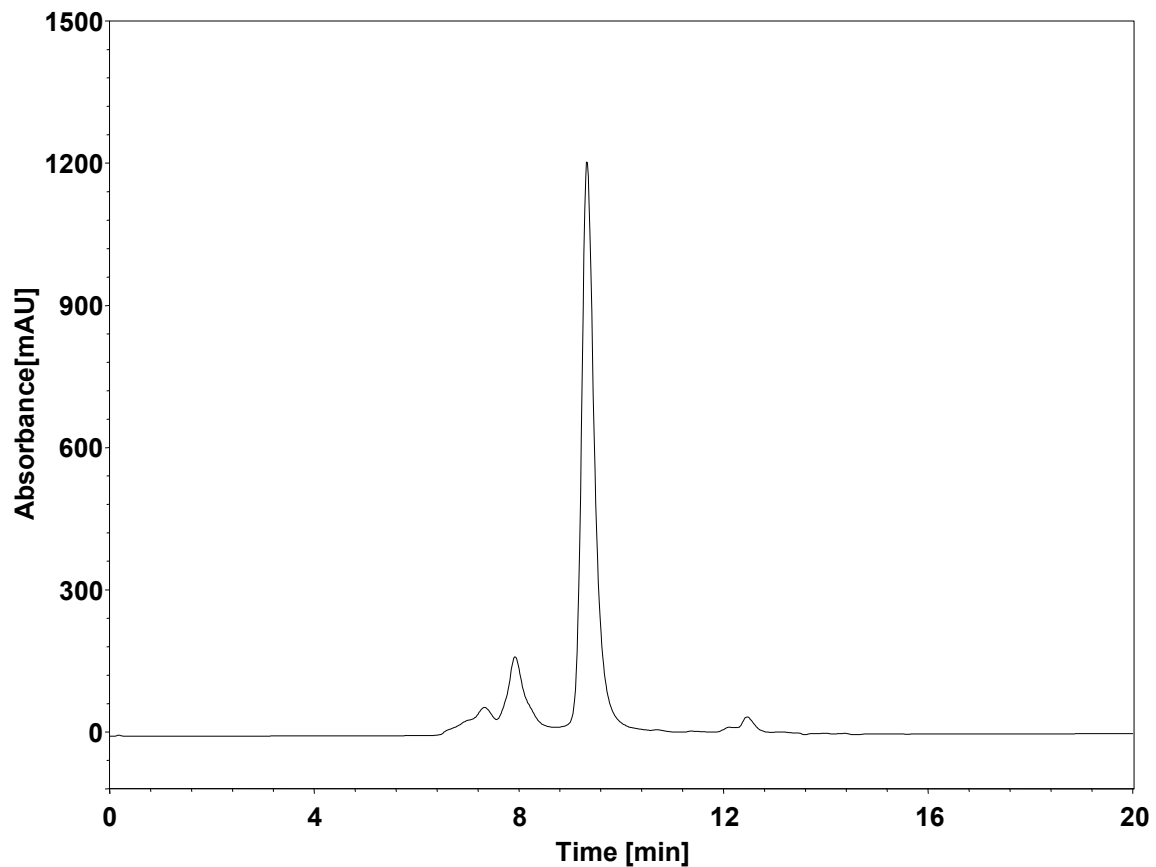


重组蛋白



Column: BioCore SEC-300, 3 μ m
Dimension: 7.8 \times 300 mm
Mobile Phase: 0.3 M NaCl in 50 mM phosphate buffer, pH6.8
Flow Rate: 0.8 mL/min
Temperature: 30 $^{\circ}$ C
Injection: 20 μ L
Detection: UV 214 nm
Instrument: Waters 2695
Sample: 重组蛋白