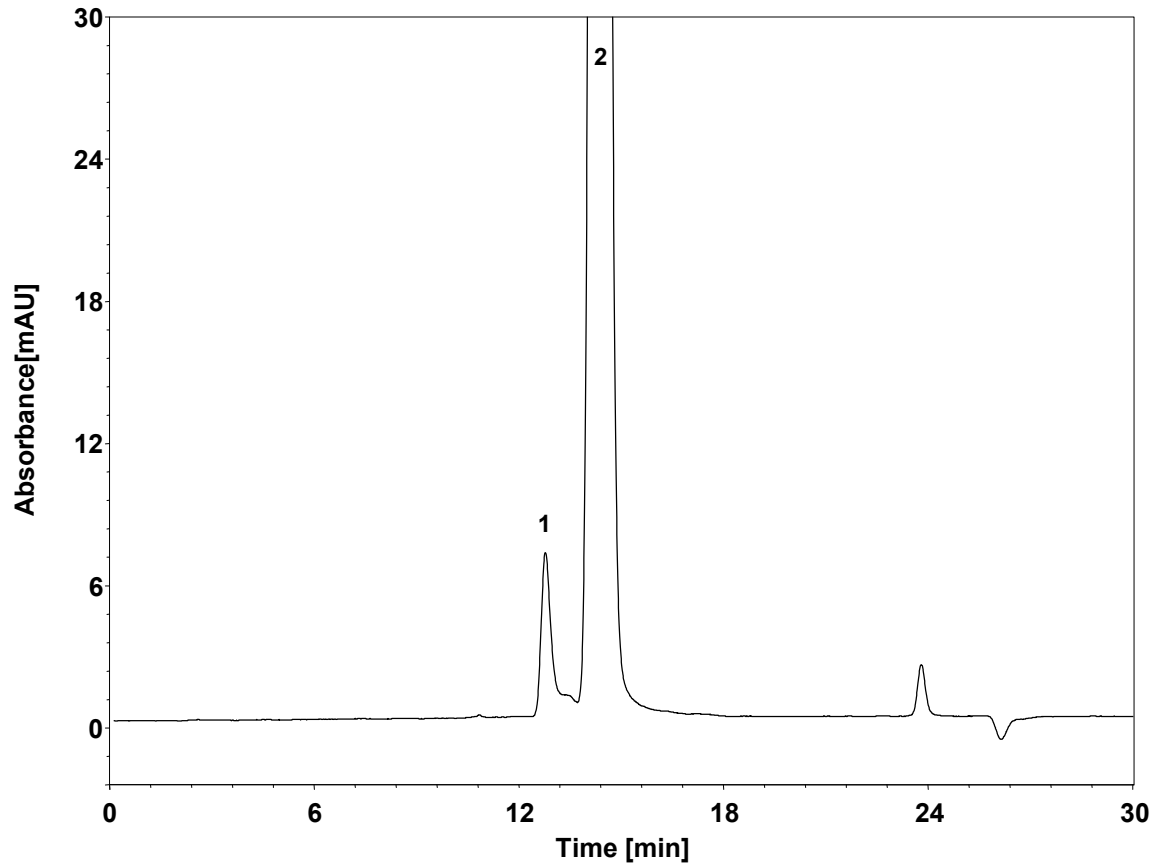


聚乙二醇



Columns: BioCore SEC-300, 5 μ m + BioCore SEC-150, 5 μ m
Dimension: 7.8 \times 300 mm
Mobile Phase: 水
Flow Rate: 1.0 mL/min
Temperature: 35 $^{\circ}$ C
Injection: 20 μ L
Detection: RID
Sample: PEG-OH
Instrument: 岛津 LC-2030C
Peaks: 1. 聚乙二醇 (M.W.=40, 000)
2. 聚乙二醇 (M.W.=20, 000)