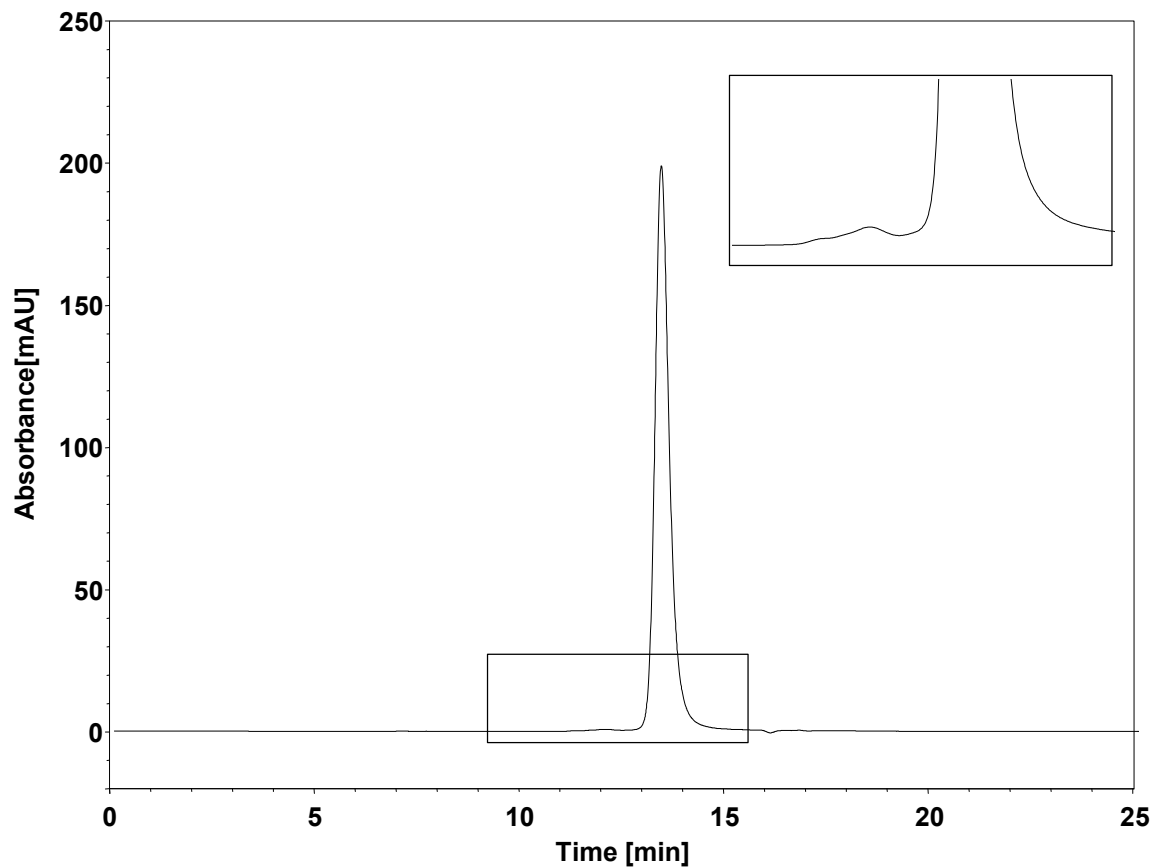


Fc融合蛋白



Column: BioCore SEC-300, 5 μ m
Dimension: 7.8 \times 300 mm
Mobile Phase: 0.3 M NaCl in 50 mM phosphate buffer, pH6.8
Flow Rate: 0.7 mL/min
Temperature: 25 $^{\circ}$ C
Injection: 20 μ L
Detection: UV 280 nm
Instrument: 岛津 LC-2030C
Sample: Fc融合蛋白 (~2 mg/mL)