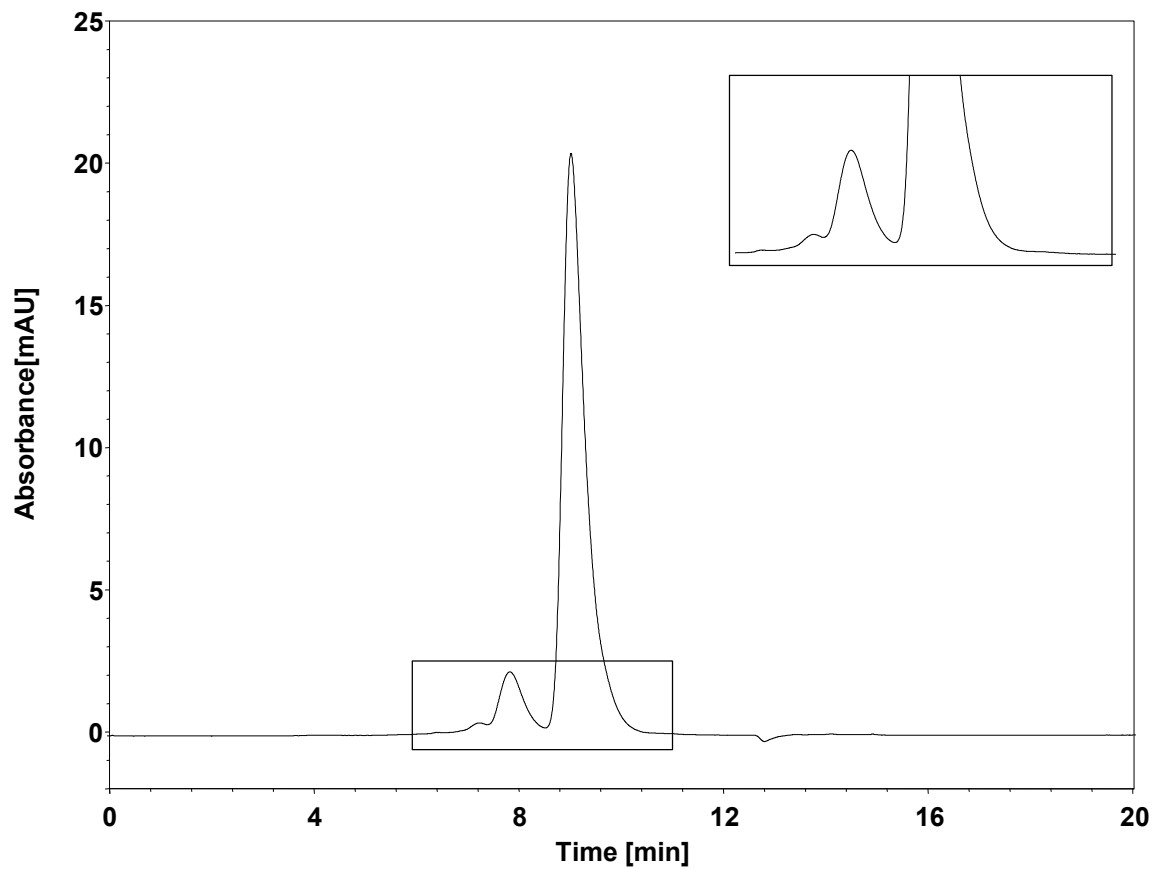


抗体



Column: BioCore SEC-300, 5 μm
Dimension: 4.6 \times 300 mm
Mobile Phase: 0.3 M NaCl in 50 mM phosphate buffer, pH6.8
Flow Rate: 0.3 mL/min
Temperature: 30 $^{\circ}\text{C}$
Injection: 10 μL
Detection: UV 280 nm
Instrument: Agilent 1290 Infinity II (Bio)
Sample: 抗体 (~1.39 mg/mL)