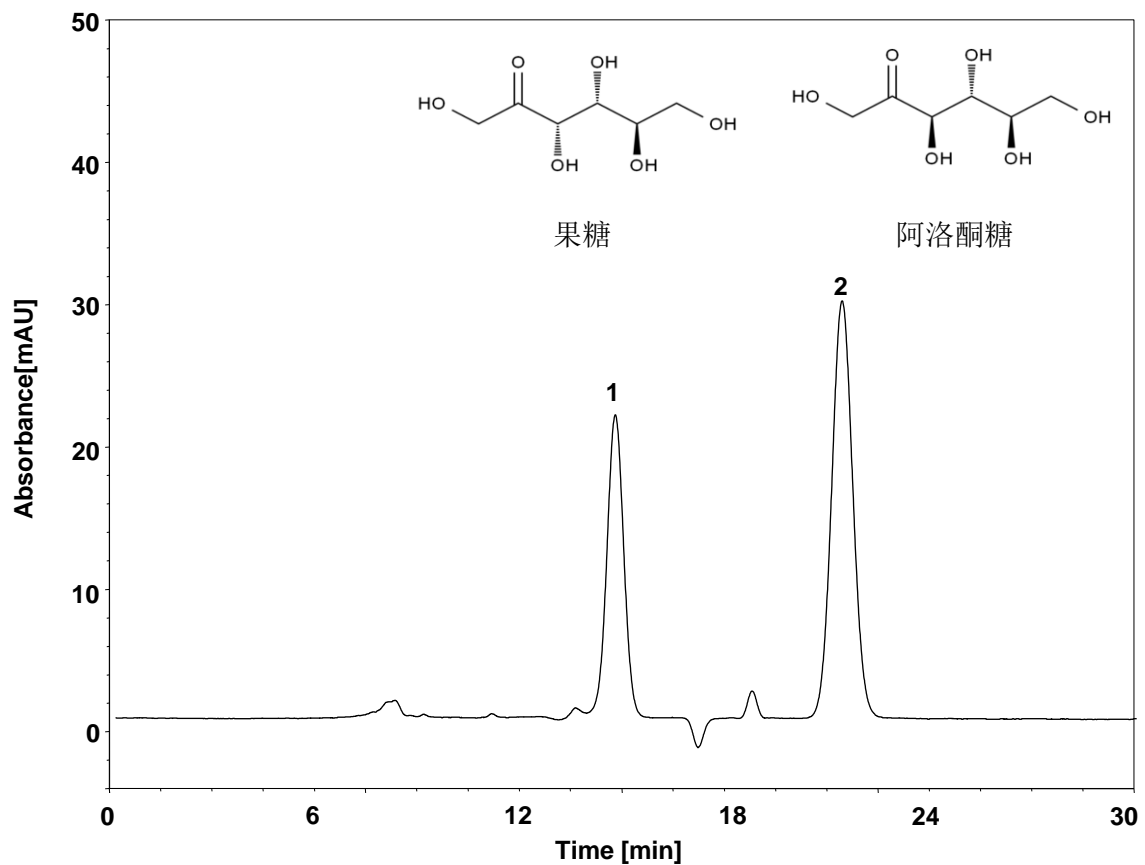


果糖与阿洛酮糖



Column: ChromCore Sugar-10Ca, 6 μ m
Dimension: 7.8 \times 300 mm
Mobile Phase: 水
Flow Rate: 0.5 mL/min
Temperature: 80 $^{\circ}$ C
Injection: 10 μ L
Detection: RID 40 $^{\circ}$ C
Instrument: 岛津LC-2030C
Sample: 阿洛酮糖与果糖
Peaks: 1. 果糖
2. 阿洛酮糖