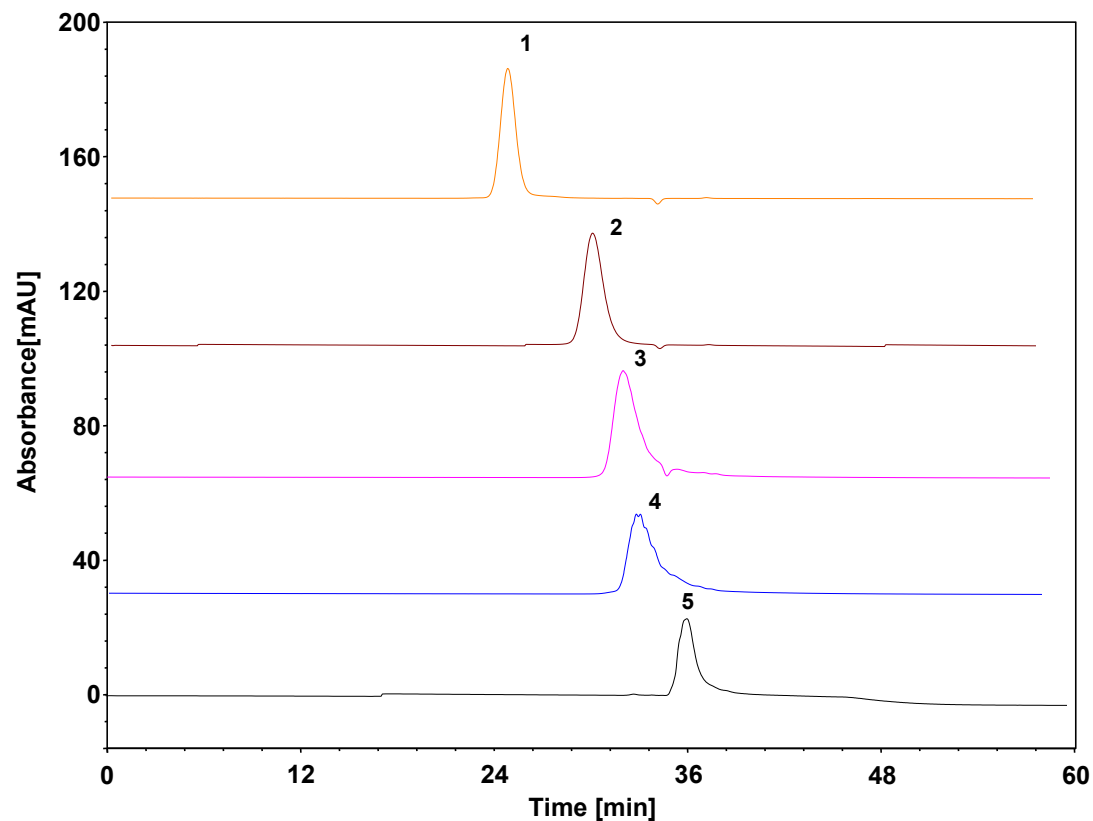


# 聚乙二醇300(中国药典)



Column: BioCore SEC-120, 5  $\mu$ m  
Dimension: 7.8 $\times$ 300 mm+ 7.8 $\times$ 300 mm 串联  
Mobile Phase: 0.1 M 硝酸钠溶液  
Flow Rate: 0.6 mL/min  
Temperature: 35  $^{\circ}$ C  
Injection: 100  $\mu$ L  
Detection: RID (35  $^{\circ}$ C)  
Sample: 聚乙二醇对照 (2 mg/mL)  
Peaks: 1. 聚乙二醇4000 2. 聚乙二醇1000 3. 聚乙二醇600  
4. 聚乙二醇400 5. 聚乙二醇200

时间(min)	分子量(Mw)	分子量Log(Log Mw)
25.835	4000	3.60
31.24	1000	3.00
32.841	600	2.79
33.951	400	2.60
36.312	200	2.30

