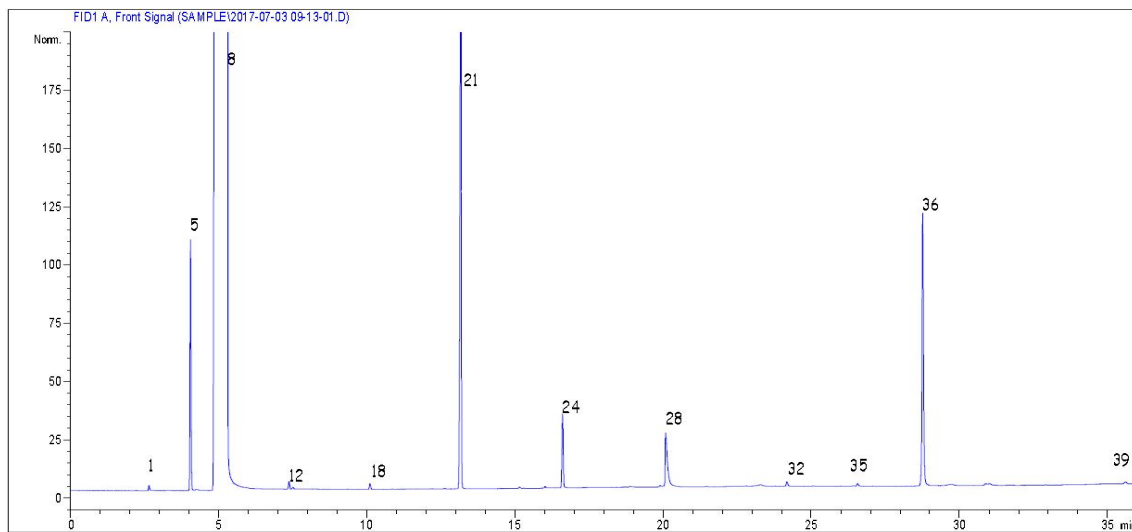




泸州老窖在NanoChrom BP-INOWAX上的分离与检测



Column: NanoChrom BP-INOWAX
Dimension: 30m×0.32mm×0.50μm
Carrier: Hydrogen, column flow 1.3 mL/min
Inlet: Split, 240 °C, split ratio: 30: 1
Oven: 50 °C (hold 5 min) to 200 °C at 5 °C/min (hold 2 min)
Inject Volume: 1 uL
Detector: FID 260 °C

Peak	Compound	Retention time (min)
1	乙醛	2.647
2	乙酸乙酯	4.048
3	乙醇	5.302
4	丁酸乙酯	7.374
5	戊酸乙酯	10.106
6	己酸乙酯	13.166
7	乳酸乙酯	16.605
8	乙酸	20.086
9	丁酸	24.179
10	正戊酸	26.55
11	正己酸	28.759
12	油酸乙酯	35.6