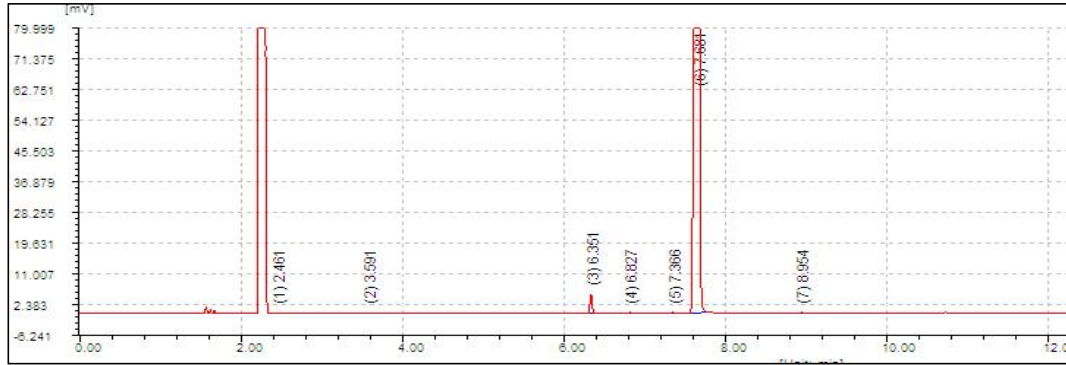




## 天然冰片在NanoChrom BP-INOWAX上的分离与检测



Column: NanoChrom BP-INOWAX  
Dimension: 30m×0.32mm×0.50μm  
Carrier: Nitrogen, head pressure: 0.08 MPa  
Inlet: Split, 250 °C, split ratio: 80: 1  
Oven: 100 °C (hold 2 min) to 200 °C (hold 10 min) at 15 °C/min  
Inject: 0.6 μL  
Solvent: 三氯甲烷  
Detector: FID 240 °C