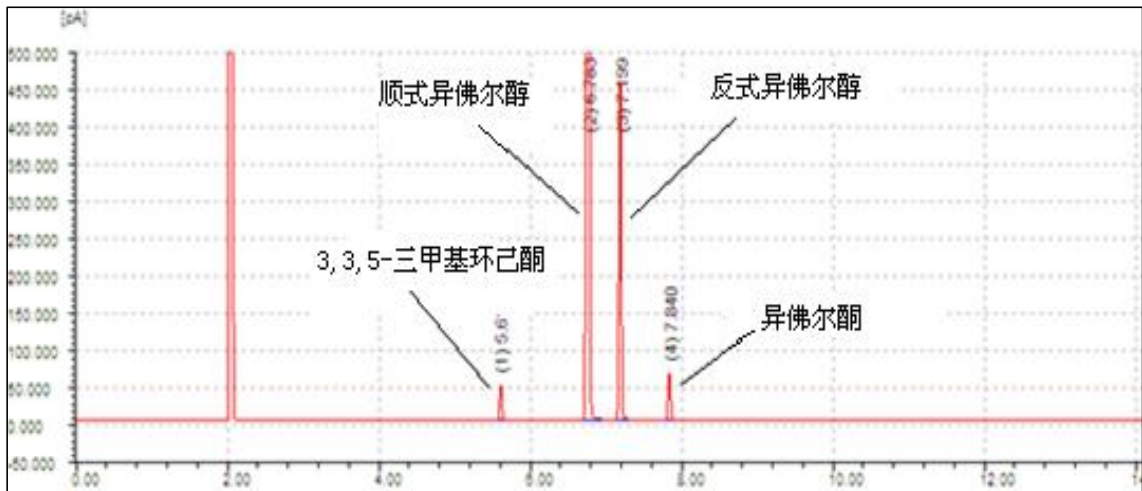
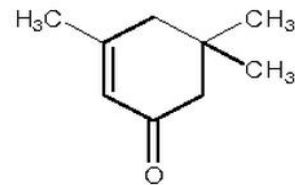




## 异佛尔酮在NanoChrom BP-FFAP上的分离与检测



Column: NanoChrom BP-FFAP  
 Dimension: 30m×0.32mm×0.50μm  
 Carrier: Nitrogen, constant pressure: 60KPa  
 Inlet: Split, 250 °C, flow ratio: 80: 1  
 Oven: 80 °C (hold 2 min) to 160 °C (hold 5 min) at 15 °C/min  
 Inject: 0.2 μL  
 Detector: FID 230 °C  
 Peaks: 3, 3, 5-Trimethylcyclohexanone (3, 3, 5-三甲基环己酮)  
 Cis-Isophorol (顺式异佛尔醇)  
 Trans-Isophorol (反式异佛尔醇)  
 Isophorone (异佛尔酮)



异佛尔酮是一种 $\alpha, \beta$ -不饱和环酮, 无色至淡黄色液体, 有薄荷味。在有机合成中用作溶剂和中间体。异佛尔酮也存在于蔓越莓中。异佛尔酮用作一些油墨、油漆、油漆、粘合剂、共聚物、涂料、饰面和杀虫剂的溶剂。它也被用作化学中间体和木材防腐剂剂和地板密封胶的成分