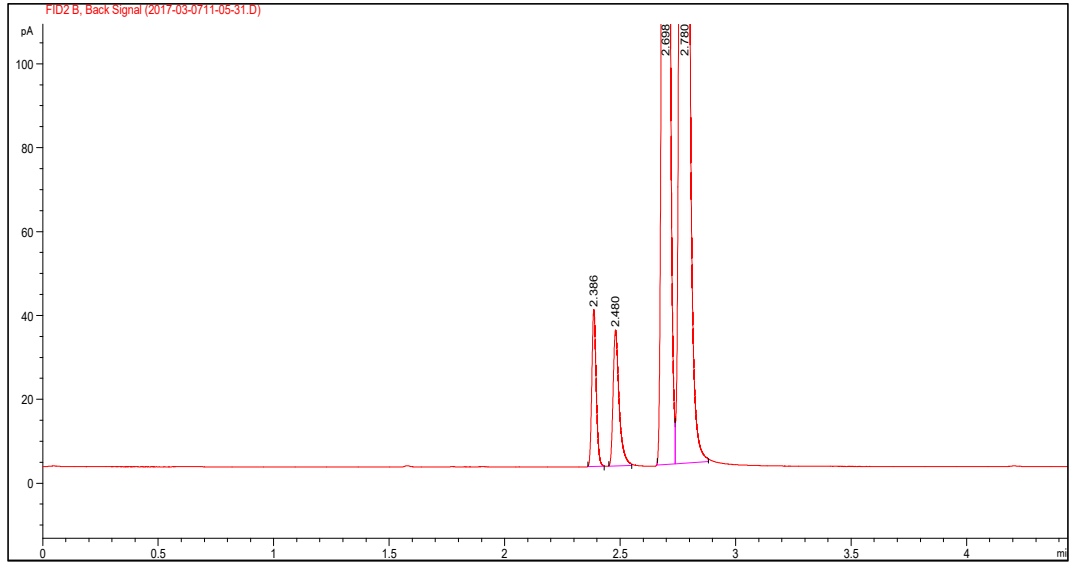




异丙醇/乙醇水溶液中的缩醛和乙酸乙酯



Column: NanoChrom BP-Wax-AQ
Dimension: 30m×0.32mm×0.25μm
Carrier: Hydrogen, 1.1 mL/min
Inlet: Split, 240 °C, split flow: 40 mL/min
Oven: 48 °C
Inject: 1 μL
Samples: Benzene/Ethanol sample
Detector: FID 260 °C
Peaks:
1.Ethyl acetate (乙酸乙酯)
2.Acetal (缩醛)
3.Iso-propanol (异丙醇)
4.Ethanol (乙醇)