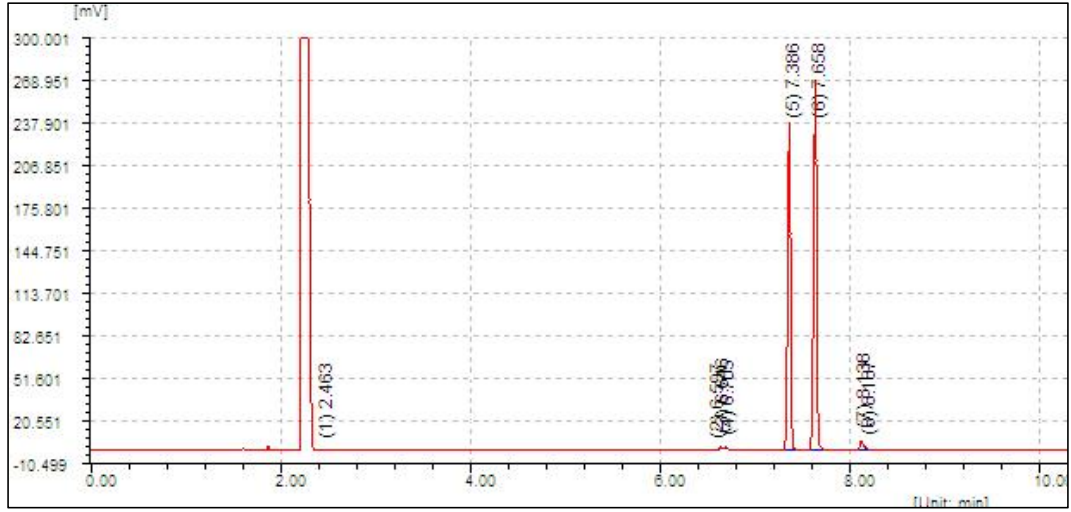




合成冰片在NanoChrom BP-INOWAX上的分离与检测



Column: NanoChrom BP-INOWAX
 Dimension: 30m×0.32mm×0.50μm
 Carrier: Nitrogen, head pressure: 0.08 MPa
 Inlet: Split, 250 °C, split ratio: 80: 1
 Oven: 100 °C (hold 2 min) to 200 °C (hold 10 min) at 15 °C/min
 Inject: 0.6 μL
 Solvent: 三氯甲烷
 Detector: FID 240 °C