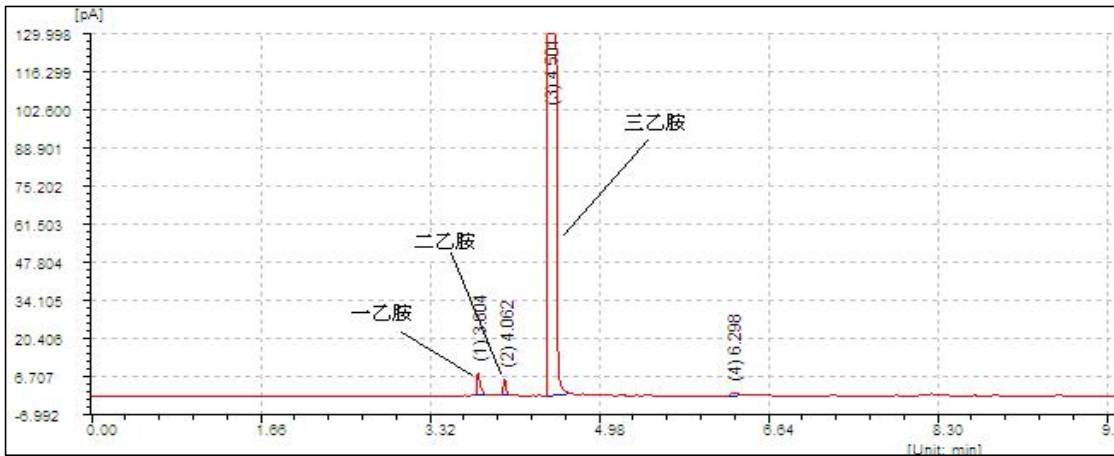




### 三乙胺在NanoChrom BP-1上的分离与检测



Column: NanoChrom BP-1  
 Dimension: 30m×0.32mm×1.0μm  
 Carrier: Nitrogen, flow 0.8 mL/min  
 Inlet: Split, 250 °C, split ratio: 60: 1  
 Oven: 100 °C (hold 2 min) to 200 °C (hold 5 min) at 10 °C/min  
 Inject: 0.2 μL  
 Detector: FID 260 °C

Peak	Compound	Retention time (min)
1	Ethylamine (一乙胺)	3.604
2	Diethylamine (二乙胺)	4.062
3	Triethylamine (三乙胺)	4.508