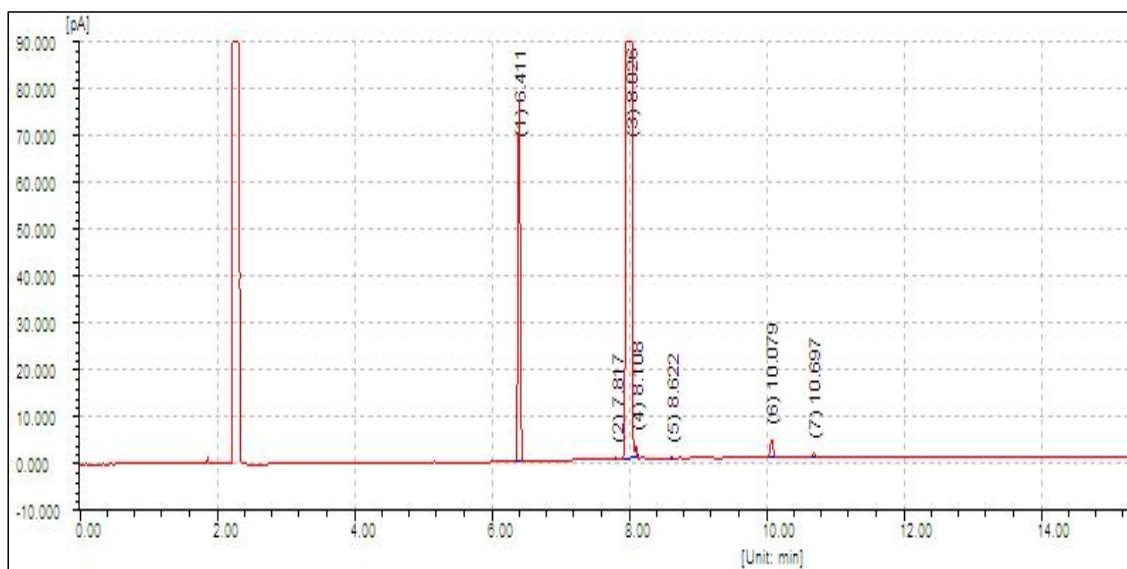




精胺 (DMPAT)在NanoChrom BP-624上的分离与检测



Column: NanoChrom BP-624
Dimension: 30m×0.32mm×1.8μm
Carrier: Nitrogen, column flow: 1.5 mL/min
Inlet: Split, 270 °C, split ratio: 20: 1
Oven: 100 °C (hold 1 min) to 200 °C at 15 °C/min
Inject: 1 μL
Solvent: 二氯甲烷
Detector: FID 280 °C