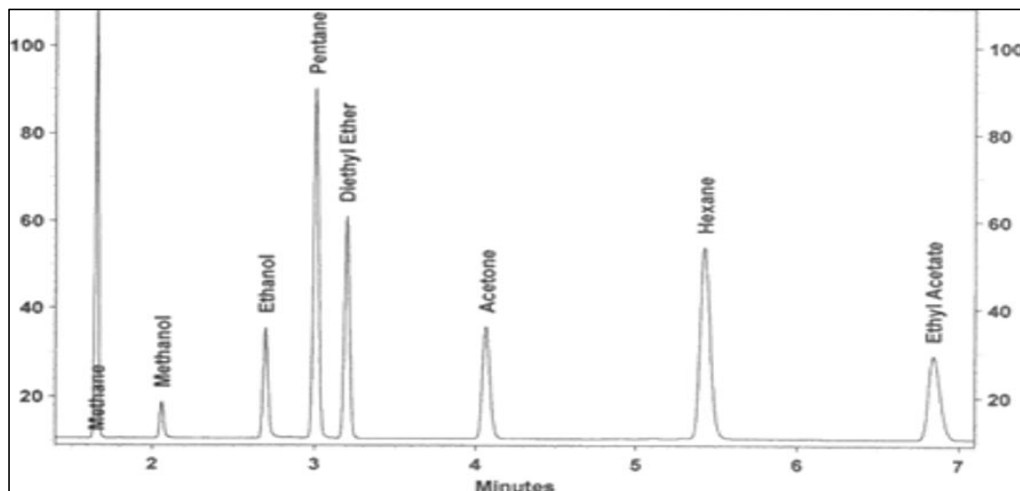




醇类在NanoChrom BP-PLOT U上的分离与检测



Column: NanoChrom BP-PLOT U
 Dimension: 30m × 0.32mm × 10μm
 Carrier: H₂, pressure: 4.0 psi
 Inlet: Split, 180 °C, split flow: 100 mL/min
 Oven: 150 °C
 Inject: 1.0 μL
 Detector: FID 200 °C

| Peak | Compound | Compound (Chinese) | Retention time (min) |
|------|---------------|--------------------|----------------------|
| 1 | Methane | 甲烷 | 1.66 |
| 2 | Methanol | 甲醇 | 2.06 |
| 3 | Ethanol | 乙醇 | 2.70 |
| 4 | Pentane | 戊烷 | 3.01 |
| 5 | Diethyl Ether | 二乙醚 | 3.20 |
| 6 | Acetone | 丙酮 | 4.07 |
| 7 | Hexane | 乙烷 | 5.43 |
| 8 | Ethyl Acetate | 乙酸乙酯 | 6.84 |