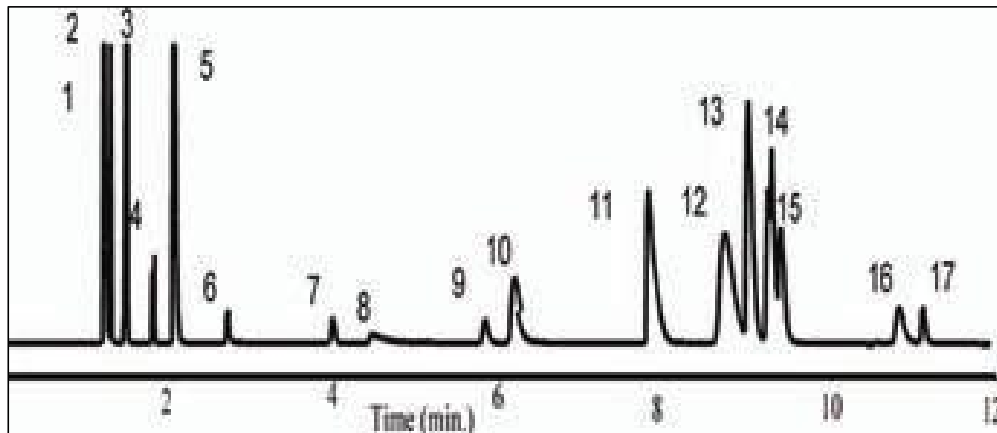




炼油厂气体样品在NanoChrom BP-PLOT Q上的分离与检测



Column: NanoChrom BP-PLOT Q
 Dimension: 30m × 0.53mm × 40μm
 Carrier: H₂
 Inlet: S/S 250 °C
 Oven: 60 °C (hold 5 min) to 200 °C (hold 1 min) at 20 °C/min
 Inject: 1.0 μL (1000 g/mL each in Hexane)
 Detector: TCD 200 °C

Peaks:

1. Air	10. Propane
2. CH ₄	11. Methanol
3. CO ₂	12. i-Butane
4. Ethylene	13. n-Butane
5. Ethane	14. i-Butene
6. H ₂ S	15. n-Butene
7. COS	16. i-Propane
8. Water	17. n-Pentane
9. Propylene	