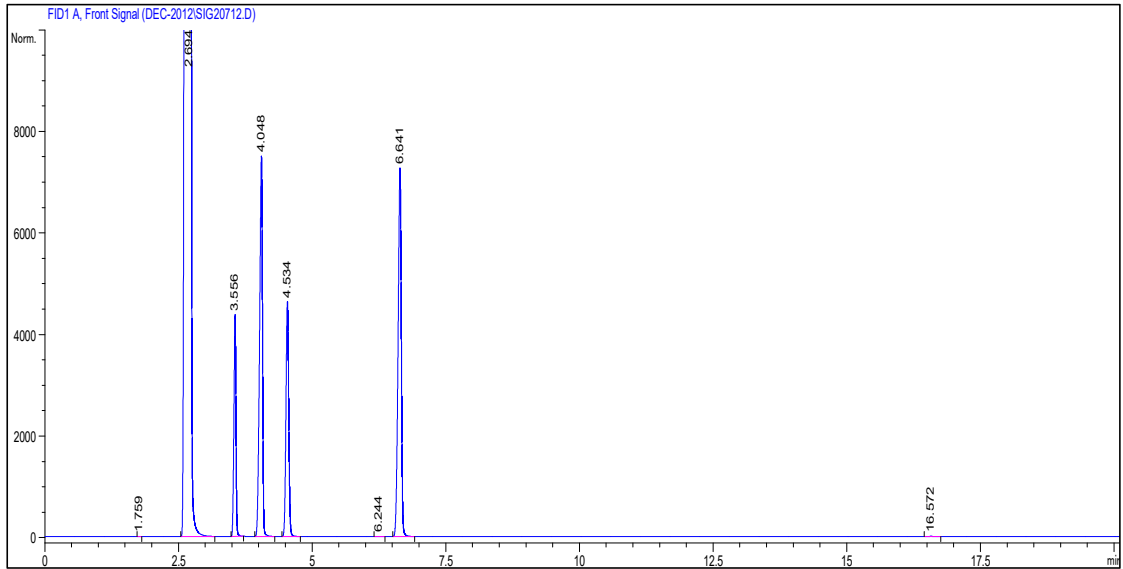


醇酮在NanoChrom BP-INOWAX上的分离与检测



Column: NanoChrom BP-INOWAX
Dimension: 50m×0.32mm×1.0μm
Carrier: Hydrogen, column flow: 2.3 mL/min
Inlet: Split, 150 °C
Oven: 45 °C to 100 °C (hold 10 min) at 5 °C/min
Inject: 1 μL
Detector: FID 250 °C
Peaks: Acetone (丙酮)
Methanol (甲醇)
Iso-propanol (异丙醇)
Toluene (甲苯)