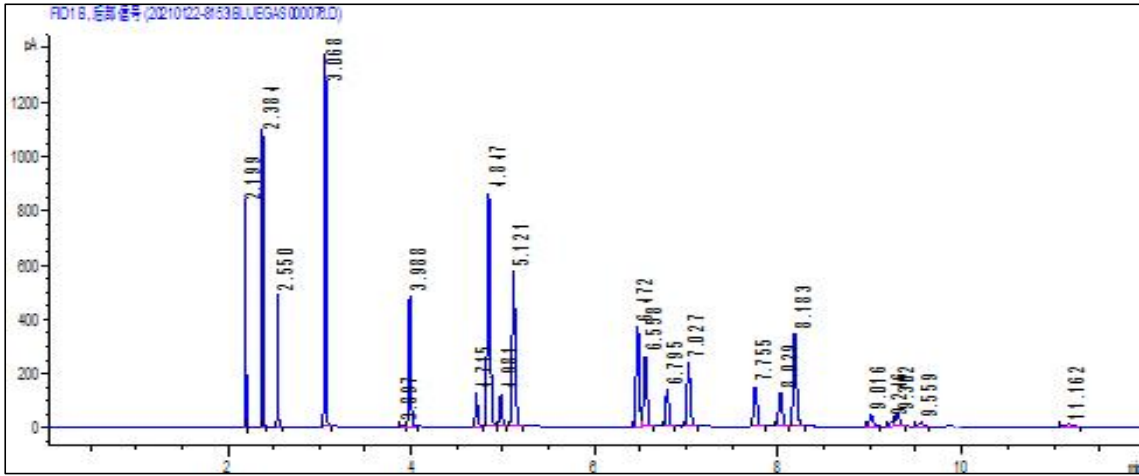


乙炔、丙二烯、1, 3-丁二烯在NanoChrom BP-PLOT Al₂O₃ "KCl"上的分离与检测



Column: NanoChrom BP-PLOT Al₂O₃ "KCl"
 Dimension: 50m×0.53mm×15μm
 Carrier: N₂, flow 5 mL/min
 Inlet: Split, 260 °C, Split ratio: 10: 1
 Oven: 80 °C (hold 3 min) to 160 °C (hold 5 min) at 15 °C/min
 Inject: 5 μL
 Detector: FID 200 °C

Peak	Compound	Resolution
1	甲烷	
2	乙烷	9.586
3	乙烯	7.850
4	丙烷	18.353
5	环丙烷	21.439
6	丙烯	2.102
7	乙炔	15.843
8	异丁烷	2.435
9	丙二烯	2.352
10	正丁烷	2.434
11	反丁烯	21.757
12	正丁烯	1.310
13	异丁烯	3.564
14	顺丁烯	3.513
15	异戊烷	10.246
16	正戊烷	3.706
17	1, 3-丁二烯	2.202
18	C5=	11.714
19	C5=	3.314
20	C5=	0.769
21	C5=	3.093
22	C6	15.794