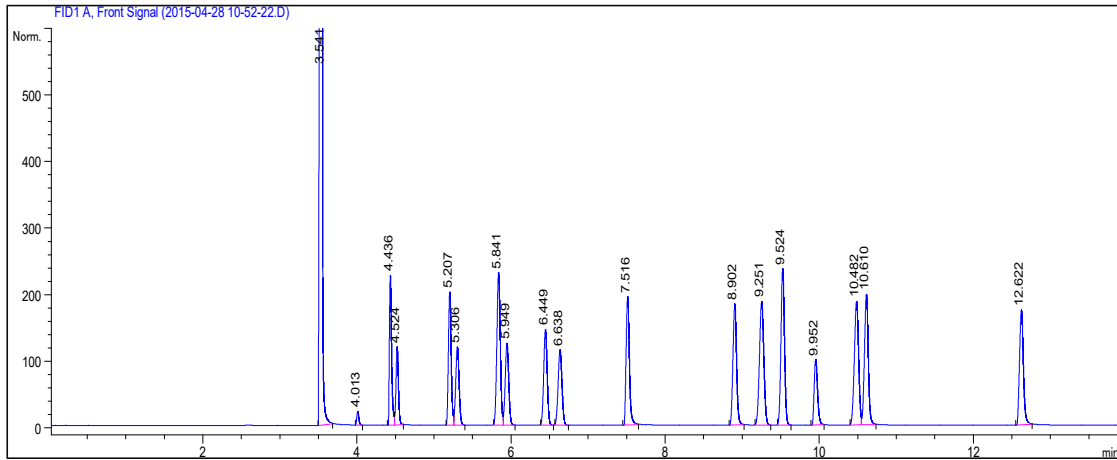




醇醚类物质在NanoChrom BP-1701上的分离与检测



Column: NanoChrom BP-1701
Dimension: 60m × 0.32mm × 1.0μm
Carrier: Hydrogen, 2.5 mL/min
Inlet: Split, 240 °C, split flow: 80 mL/min
Oven: 40 °C (hold 5.5 min) to 60 °C (hold 1 min) at 3 °C/min to 150 °C (hold 1 min) at 15 °C/min
Inject: 1 μL
Detector: FID 260 °C

Peaks	Compound	Retention time (min)	Resolution
1	methanol (甲醇)	3.541	
2	ethyl ether (乙醚)	4.013	
3	dimethoxymethane (二甲氧基甲烷)	4.436	
4	ethanol (乙醇)	4.524	2.70
5	iso-propanol (异丙醇)	5.207	
6	methyl tert-butyl ether (MTBE) (甲基叔丁基醚)	5.306	2.27
7	t-Butanol (叔丁醇)	5.841	
8	iso-propyl ether (异丙醚)	5.949	2.19
9	methylcyclopentane (甲基环戊烷)	6.449	
10	tert-butyl ethyl ether (ETBE) (叔丁基乙醚)	6.638	3.65
11	1-propanol (正丙醇)	7.516	
12	sec-butanol (仲丁醇)	8.902	
13	iso-butanol (异丁醇)	9.251	
14	1, 2-dimethoxyethane (1, 2-二甲氧基乙烷)	9.524	4.88
15	benzene (苯)	9.952	
16	tert-pentanol (tert-amyl alcohol) (叔戊醇)	10.482	
17	tert-amyl methyl ether (TAME) (甲基叔戊基醚)	10.610	2.23
18	1-butanol (1-丁醇)	12.622	