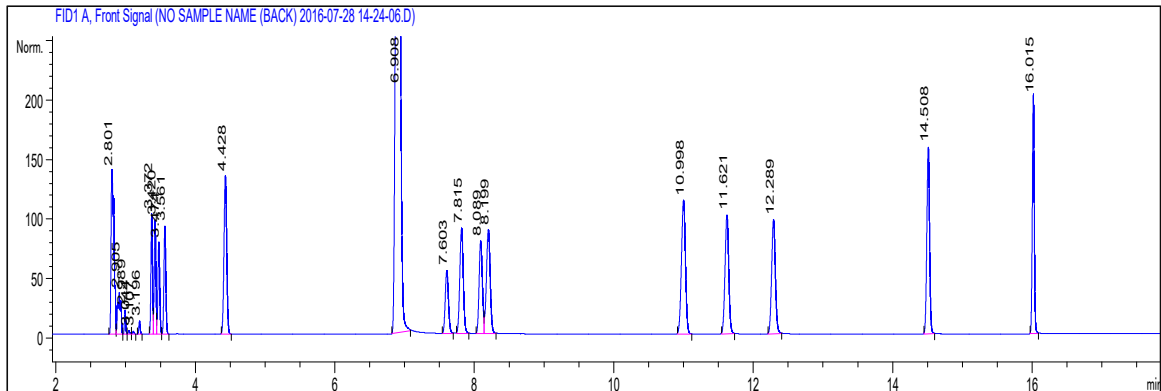


氧化物在NanoChrom BP-INOWAX上的分离与检测



Column: NanoChrom BP-INOWAX
 Dimension: 60m×0.32mm×0.50μm
 Carrier: Hydrogen, column flow: 2.3 mL/min
 Inlet: Split, 240 °C, split ratio: 50: 1
 Oven: 40 °C (hold 5.5 min) to 60 °C (hold 1 min) at 3 °C/min to 150 °C (hold 1 min) at 15 °C/min
 Samples: oxygenatesIn C1-C4
 Inject: 1 μL
 Detector: FID 260 °C

Peaks	Compound	Retention time (min)	Resolution
1	methane/ethane (甲烷/乙烷)	2.801	
2	propane (丙烷)	2.905	2.59
3	butane (丁烷)	2.989	2.85
4	pentane (戊烷)	3.044	2.49
5	hexane (己烷)	3.107	2.80
6	dimethoxymethane (二甲氧基甲烷)	3.196	4.18
7	ethyl ether (乙醚)	3.372	
8	MTBE (甲基叔丁基醚)	3.420	1.84
9	ETBE (叔丁基乙醚)	3.474	1.93
10	iso-propyl ether (异丙醚)	3.561	2.98
11	TAME (甲基叔戊基醚)	4.428	
12	methanol (甲醇)	6.908	
13	1, 2-dimethoxyethane (1, 2-二甲氧基乙烷)	7.603	
14	iso-propanol (异丙醇)	7.815	4.08
15	benzene (苯)	8.089	
16	ethanol (乙醇)	8.199	1.99
17	tert-pentanol (叔戊醇)	10.998	
18	sec-butanol (仲丁醇)	11.621	
19	1-propanol (正丙醇)	12.289	
20	iso-butanol (异丁醇)	14.508	
21	1-butanol (1-丁醇)	16.015	