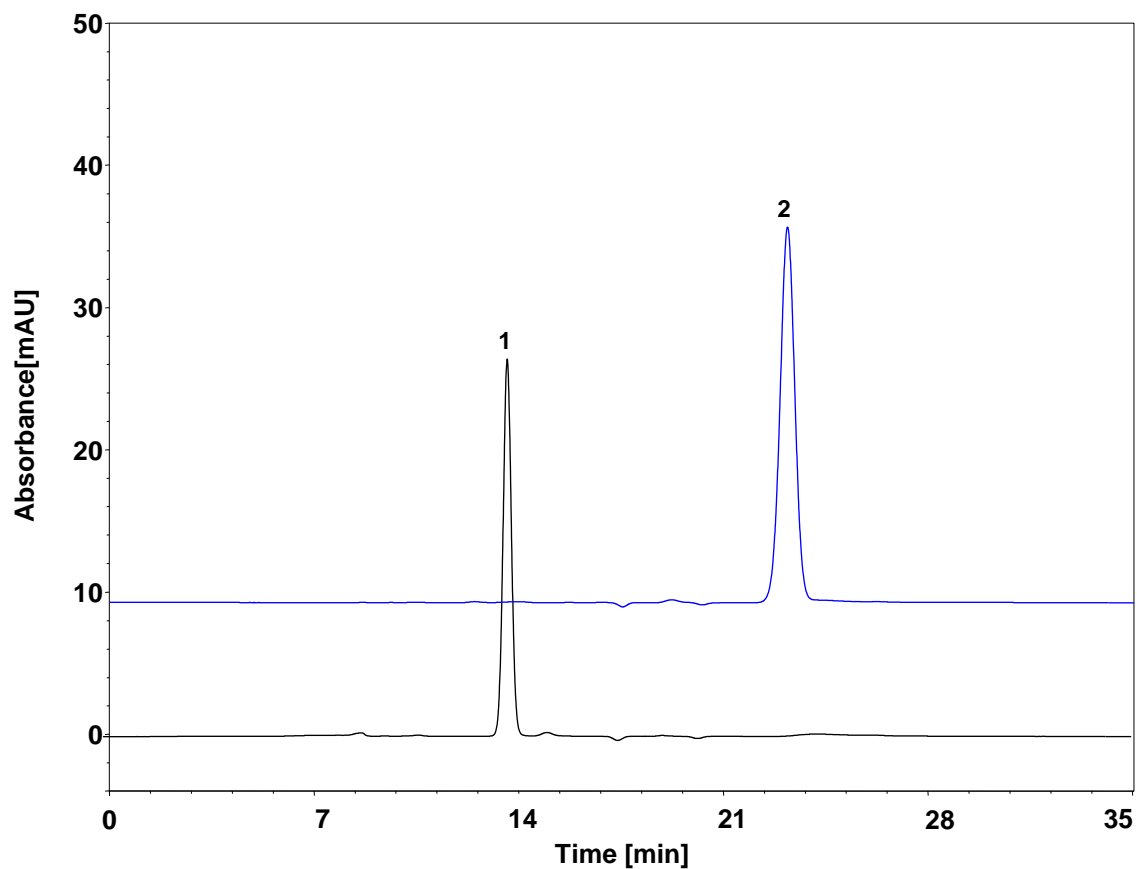
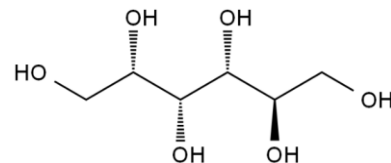


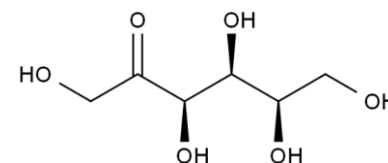
山梨醇、山梨糖



Column: ChromCore Sugar-10Ca, 6 μ m
Dimension: 7.8 \times 300 mm
Mobile Phase: 水
Flow Rate: 0.5 mL/min
Temperature: 80 $^{\circ}$ C
Injection: 20 μ L
Detection: RID
Sample: 山梨醇与山梨糖 (5 mg/mL水溶解)
Peaks: 1. 山梨糖
2. 山梨醇



山梨醇



山梨糖