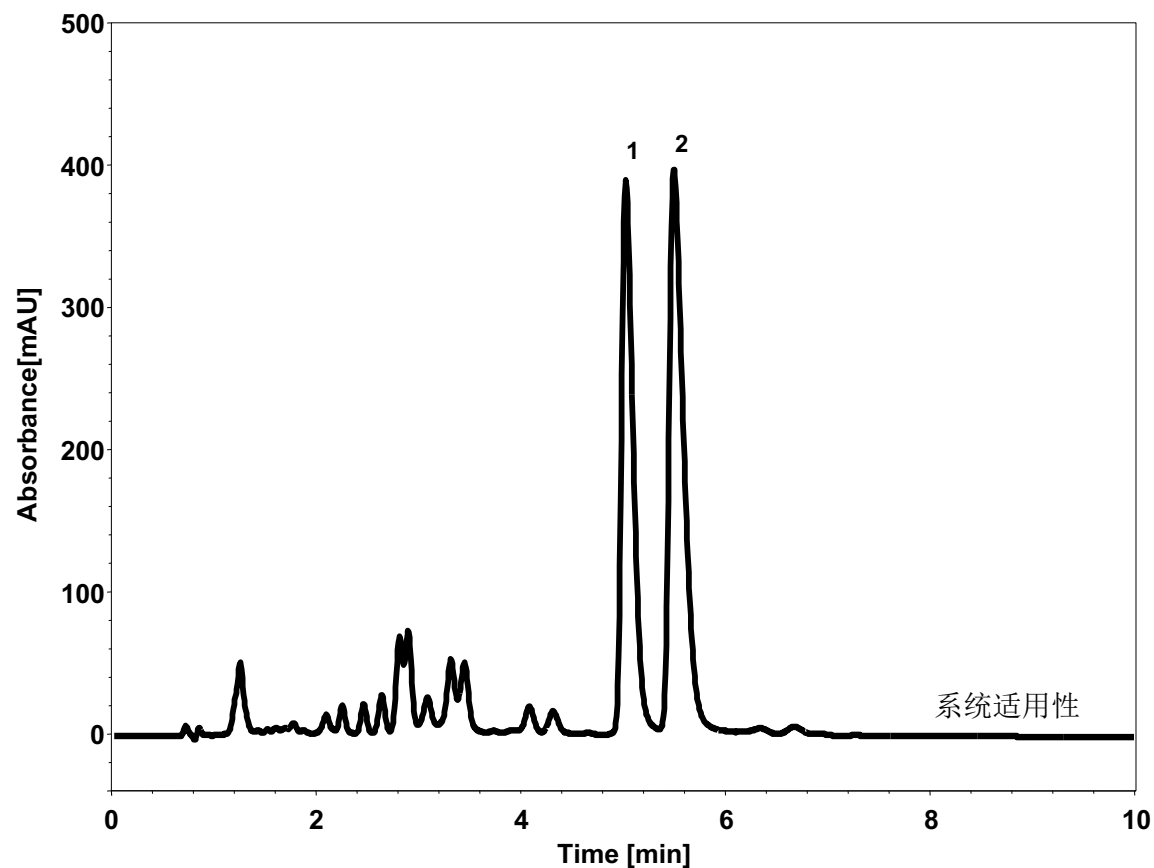
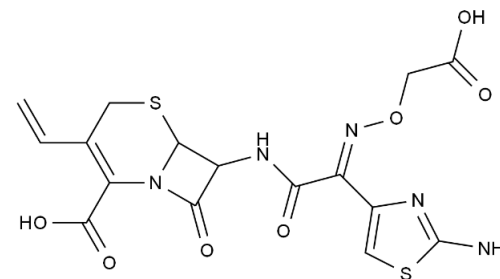


头孢克肟(5 μm)



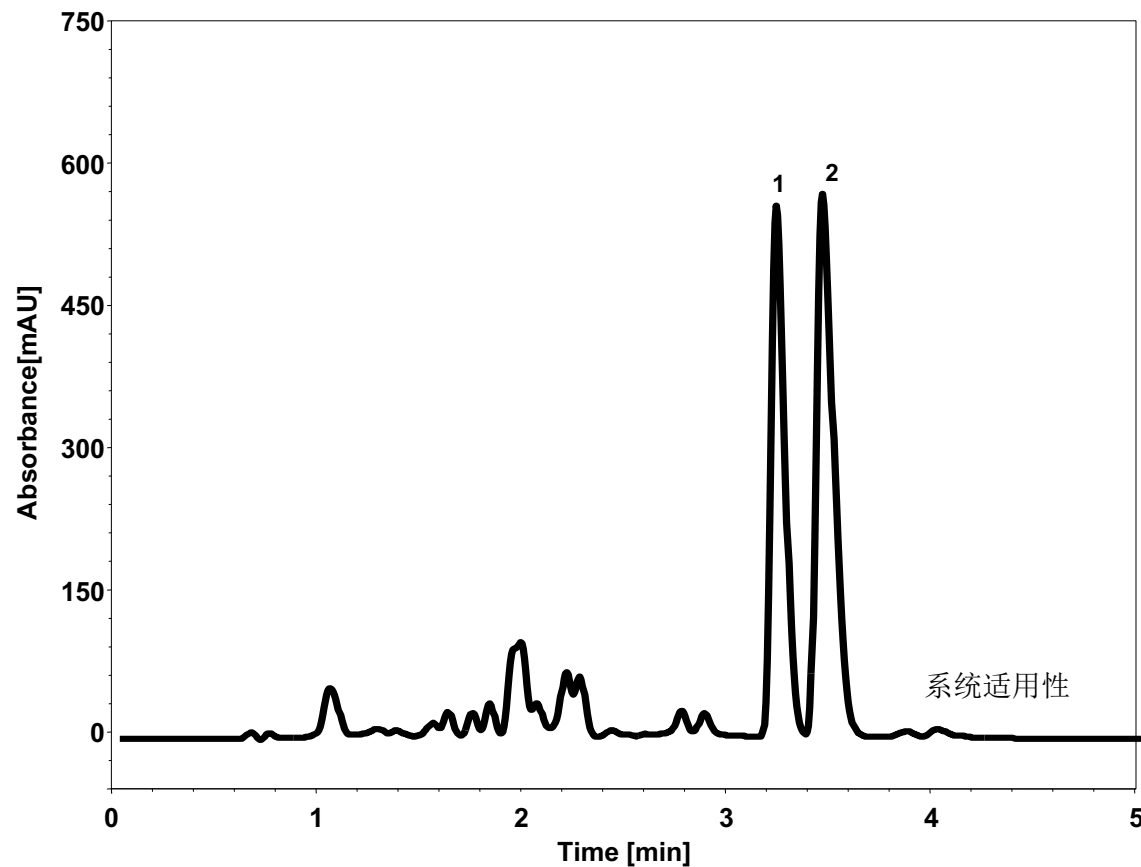
Column: ChromCore 120 C18, 5 μm
Dimension: 2.1 \times 100 mm
Mobile Phase: 26/74 v/v 乙腈/四丁基氢氧化铵溶液, pH7.0
Flow Rate: 0.4 mL/min
Temperature: 40 $^{\circ}\text{C}$
Injection: 2 μL
Detection: UV 254 nm
Sample: 头孢克肟
Peak: 1. 杂质D
2. 头孢克肟

系统适用性	保留时间 (min)	理论塔板数	拖尾因子	分离度
杂质D	5.025	9060	1.55	/
头孢克肟	5.497	6901	1.72	1.99



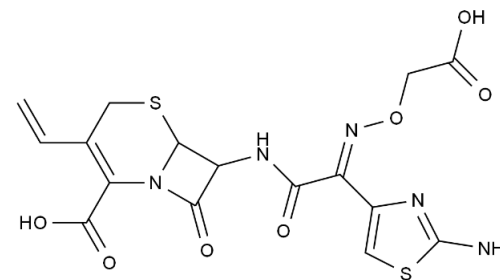
头孢克肟

头孢克肟(1.8 μm)



Column: ChromCore C18, 1.8 μm
Dimension: 2.1 \times 100 mm
Mobile Phase: 28/72 v/v 乙腈/四丁基氢氧化铵溶液, pH7.0
Flow Rate: 0.4 mL/min
Temperature: 40 $^{\circ}\text{C}$
Injection: 2 μL
Detection: UV 254 nm
Sample: 头孢克肟
Peak: 1. 杂质D
2. 头孢克肟

系统适用性	保留时间 (min)	理论塔板数	拖尾因子	分离度
杂质D	3.217	9742	1.41	/
头孢克肟	3.443	7383	1.58	1.56



头孢克肟