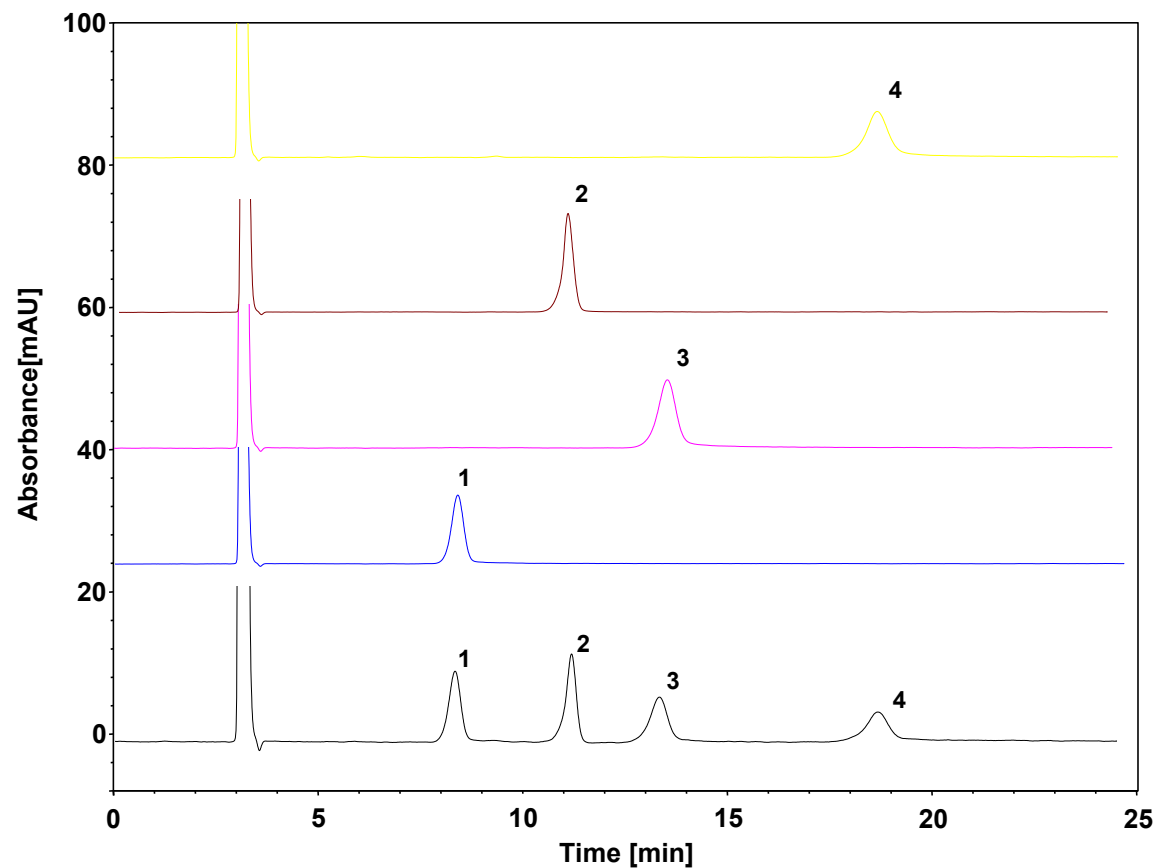


葡萄糖、乳糖、蔗糖、三糖



Column: ChromCore NH₂, 5 μm
Dimension: 4.6×250 mm
Mobile Phase: 70/30 v/v 乙腈/水
Flow Rate: 1.0 mL/min
Temperature: 40 °C
Injection: 10 μL
Detection: RID
Sample: 单糖、多糖
Peaks:
1. 葡萄糖
2. 蔗糖
3. 乳糖
4. 三糖