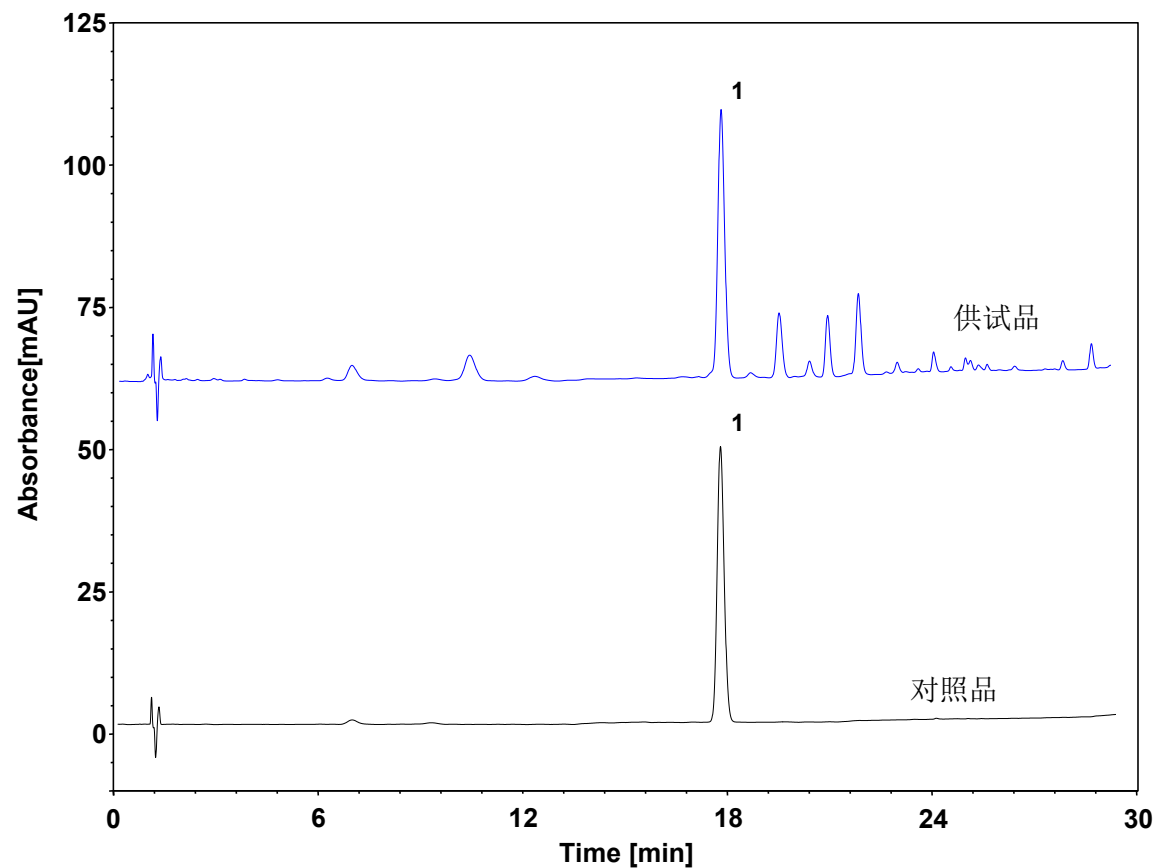


葛根温胆颗粒



Column: ChromCore AR C18, 5 μ m

Dimension: 2.1 \times 150 mm

Mobile Phase: A) 乙腈

B) 1%乙酸水溶液

Gradient: t(min) %A %B

0 6 94

12 6 94

20 12 88

30 30 70

35 6 94

45 6 94

Flow Rate: 0.5 mL/min

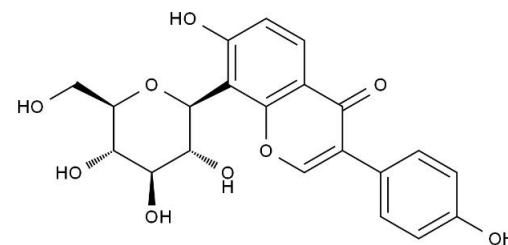
Temperature: 30 $^{\circ}$ C

Injection: 1 μ L

Detection: UV 250 nm

Sample: 葛根温胆颗粒

Peak: 1. 葛根素



葛根素