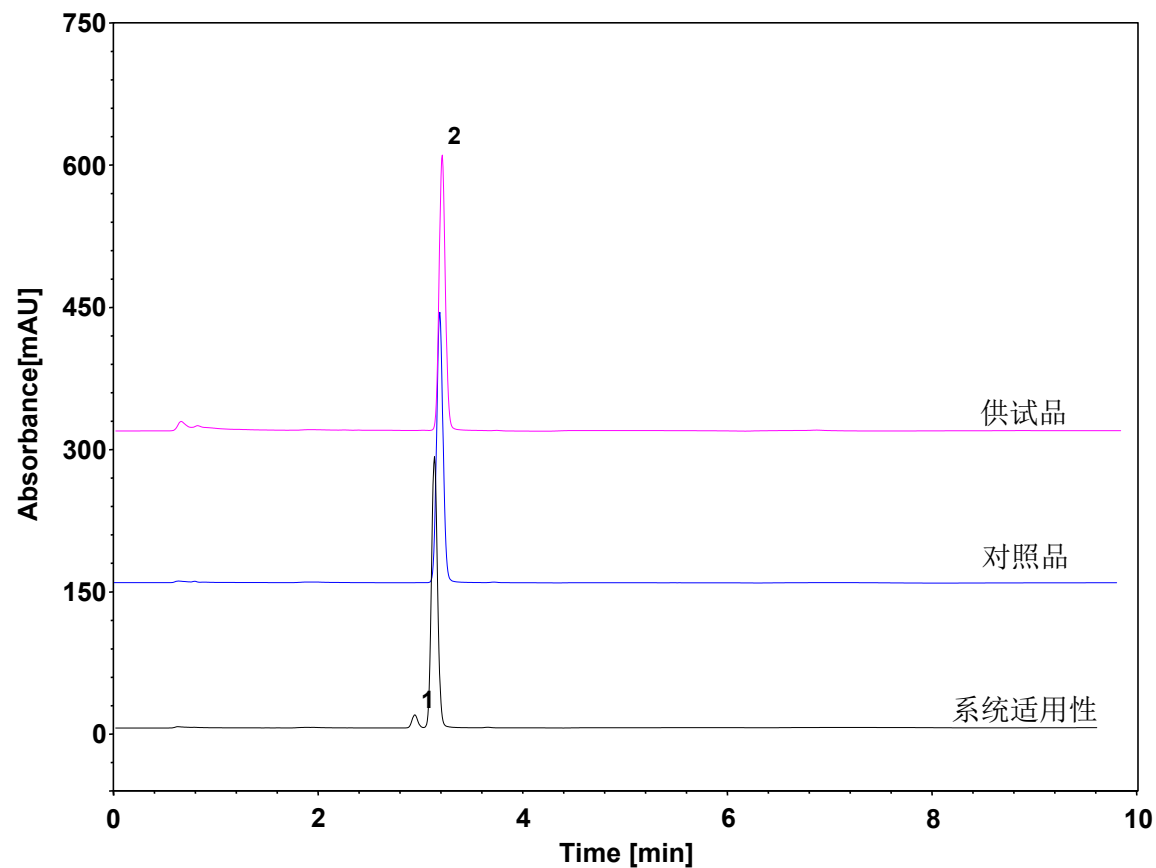
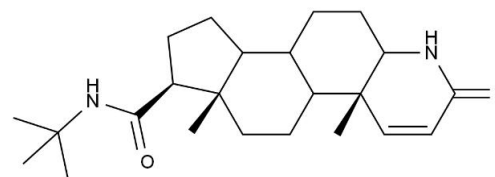


非那雄胺-含量测定



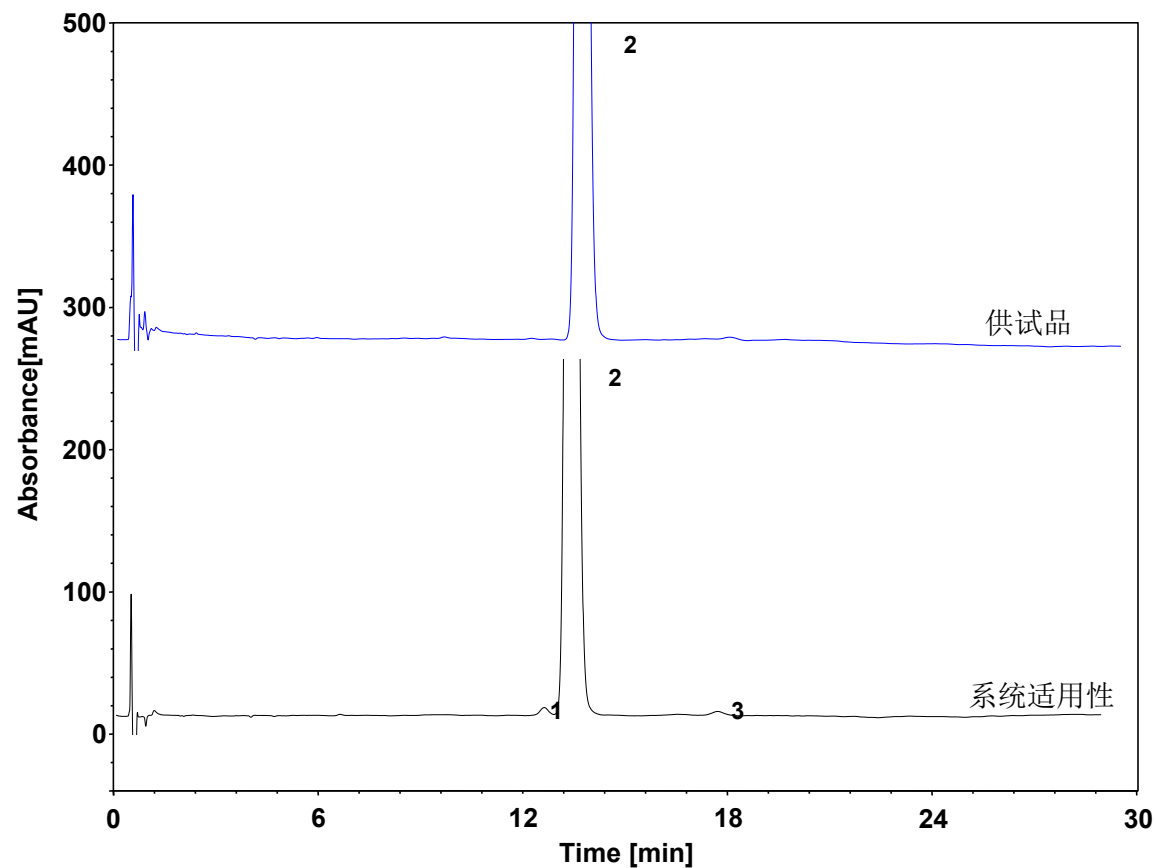
Column: ChromCore 120 C18, 1.8 μm
Dimension: 2.1 \times 100 mm
Mobile Phase: 54/46 v/v 水/乙腈
Flow Rate: 0.28 mL/min
Temperature: 30 $^{\circ}\text{C}$
Injection: 1.7 μL
Detection: UV 210 nm
Sample: 非那雄胺
Peaks: 1. 杂质 I
2. 非那雄胺

系统适用性	保留时间 (min)	理论塔板数	拖尾因子	分离度
杂质 I	3.049	12122	1.08	/
非那雄胺	3.249	12888	1.08	1.78



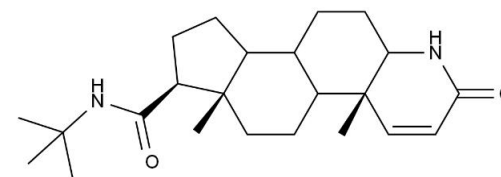
非那雄胺

非那雄胺-有关物质



Column: ChromCore 120 C18, 3 μ m
Dimension: 2.1 \times 100 mm
Mobile Phase: 10/10/80 v/v 乙腈/四氢呋喃/磷酸水溶液, pH3.0
Flow Rate: 0.6 mL/min
Temperature: 55 $^{\circ}$ C
Injection: 3 μ L
Detection: UV 210 nm
Sample: 非那雄胺
Peaks: 1. 杂质 I
2. 非那雄胺
3. 杂质 C

系统适用性	保留时间 (min)	理论塔板数	拖尾因子	分离度
杂质 I	13.046	11257	0.96	/
非那雄胺	13.847	10964	1.19	1.57
杂质 C	18.323	10293	0.91	7.16



非那雄胺