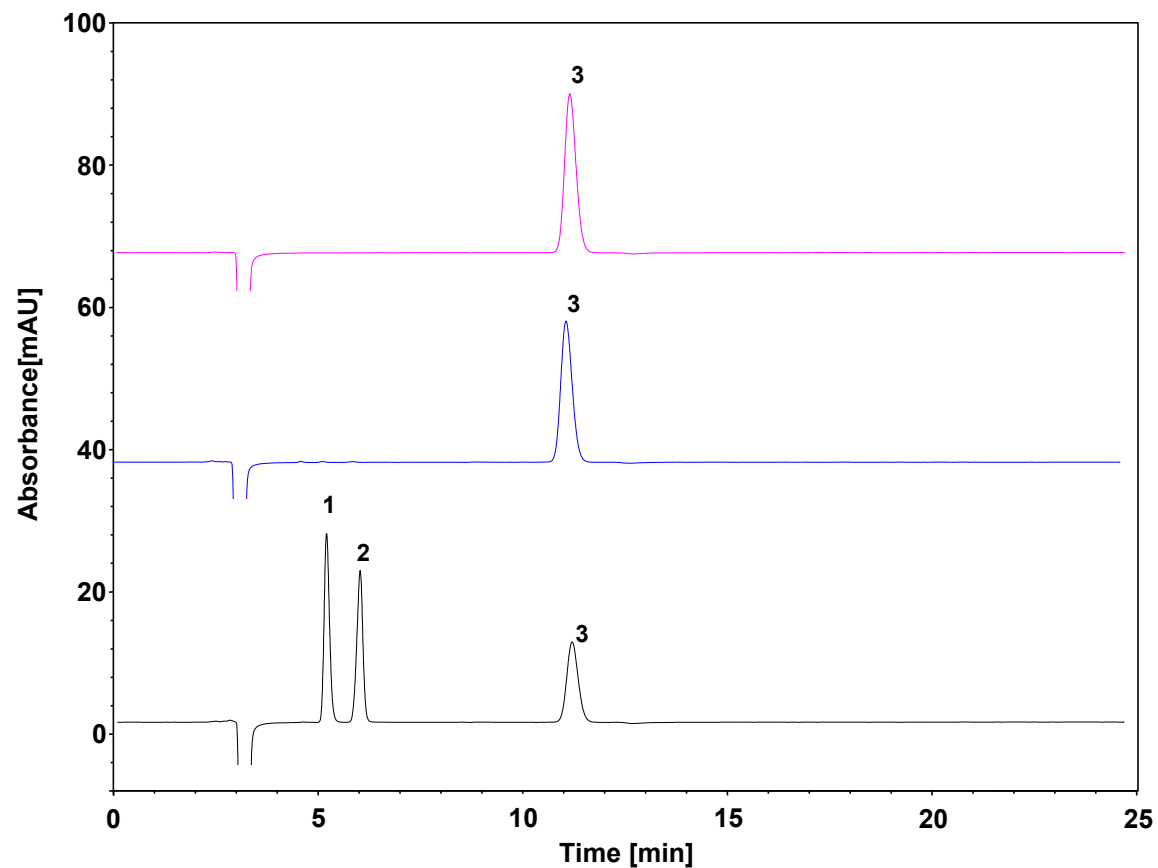


倍他环糊精(中国药典)



Column: ChromCore 120 C18, 5 μ m
Dimension: 4.6 \times 250 mm
Mobile Phase: 7/93 v/v 甲醇/水
Flow Rate: 1.0 mL/min
Temperature: 40 $^{\circ}$ C
Injection: 50 μ L
Detection: RID
Sample: 倍他环糊精
Peaks:
1. 伽马环糊精
2. 阿尔法环糊精
3. 倍他环糊精