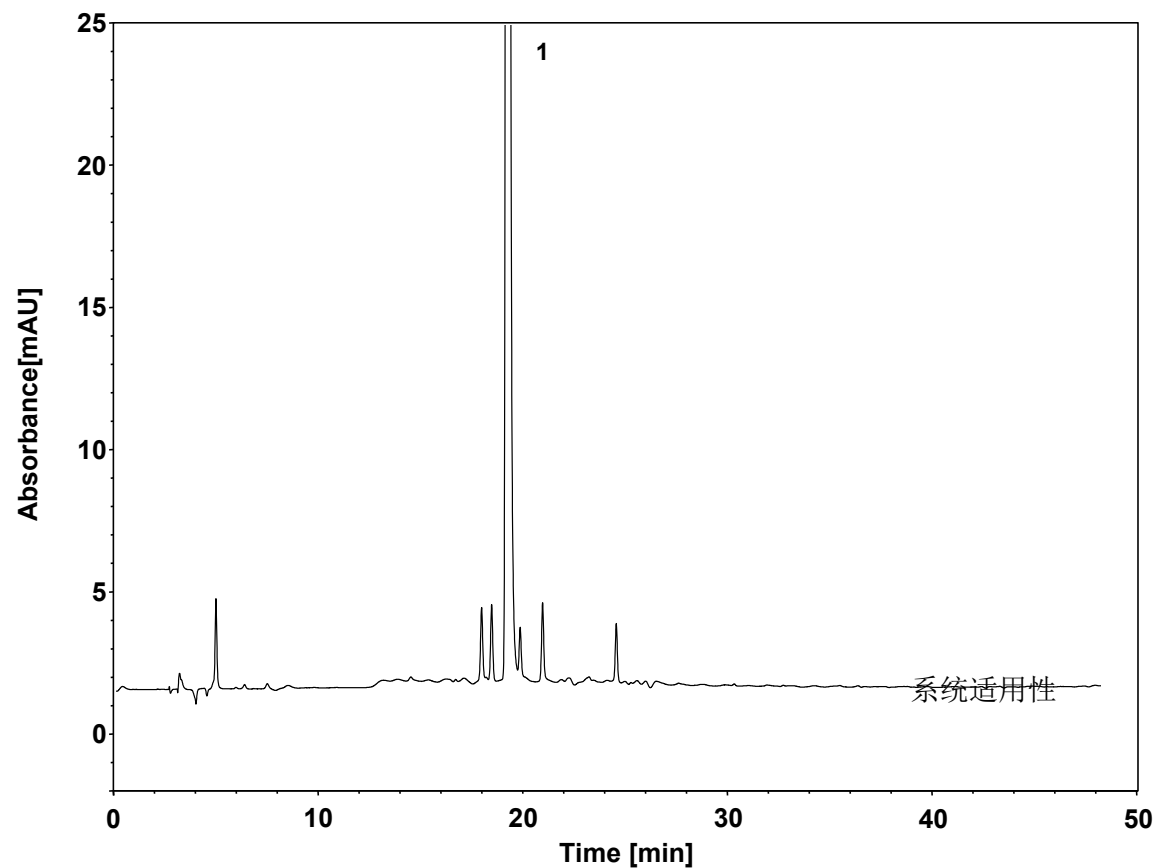


恩替卡韦



Column: ChromCore 120 C18, 5 μ m
Dimension: 4.6 \times 250 mm
Mobile Phase: A) 乙腈
B) 100 mM醋酸铵, pH5.2
Gradient:

t(min)	%A	%B
0	3	97
8	3	97
50	25	75
75	83.5	16.5
90	3	97
100	3	97

Flow Rate: 1.0 mL/min
Temperature: 25 $^{\circ}$ C
Injection: 10 μ L
Detection: UV 254 nm
Sample: 恩替卡韦
Peak: 1. 恩替卡韦