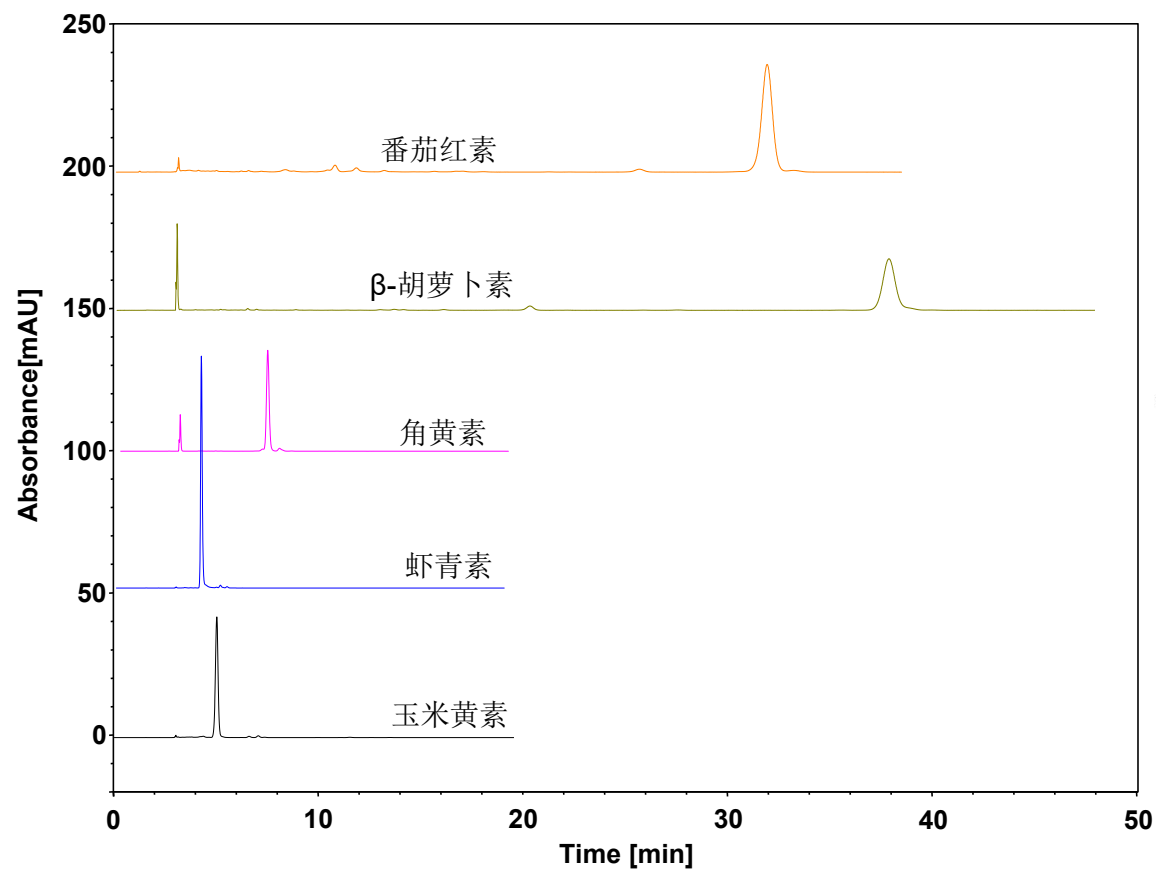


# 玉米黄素、虾青素、角黄素、 $\beta$ -胡萝卜素、番茄红素



Column: ChromCore C18, 5  $\mu$ m

Dimension: 4.6  $\times$  250 mm

Mobile Phase: 甲醇

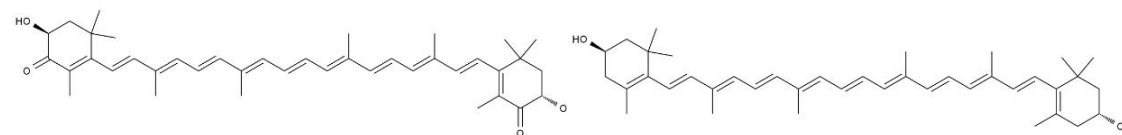
Flow Rate: 1.0 mL/min

Temperature: 30  $^{\circ}$ C

Injection: 5  $\mu$ L

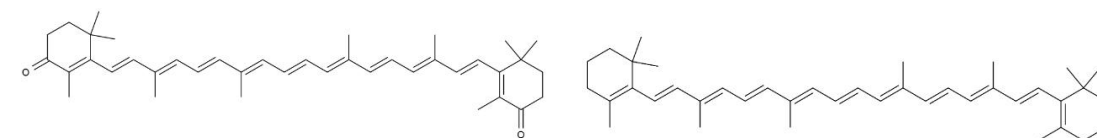
Detection: UV 478 nm

Sample: 玉米黄素、虾青素、角黄素、 $\beta$ -胡萝卜素、番茄红素



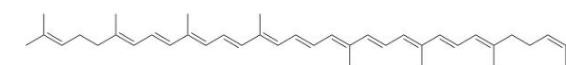
虾青素

玉米黄素



角黄素

$\beta$ -胡萝卜素



番茄红素