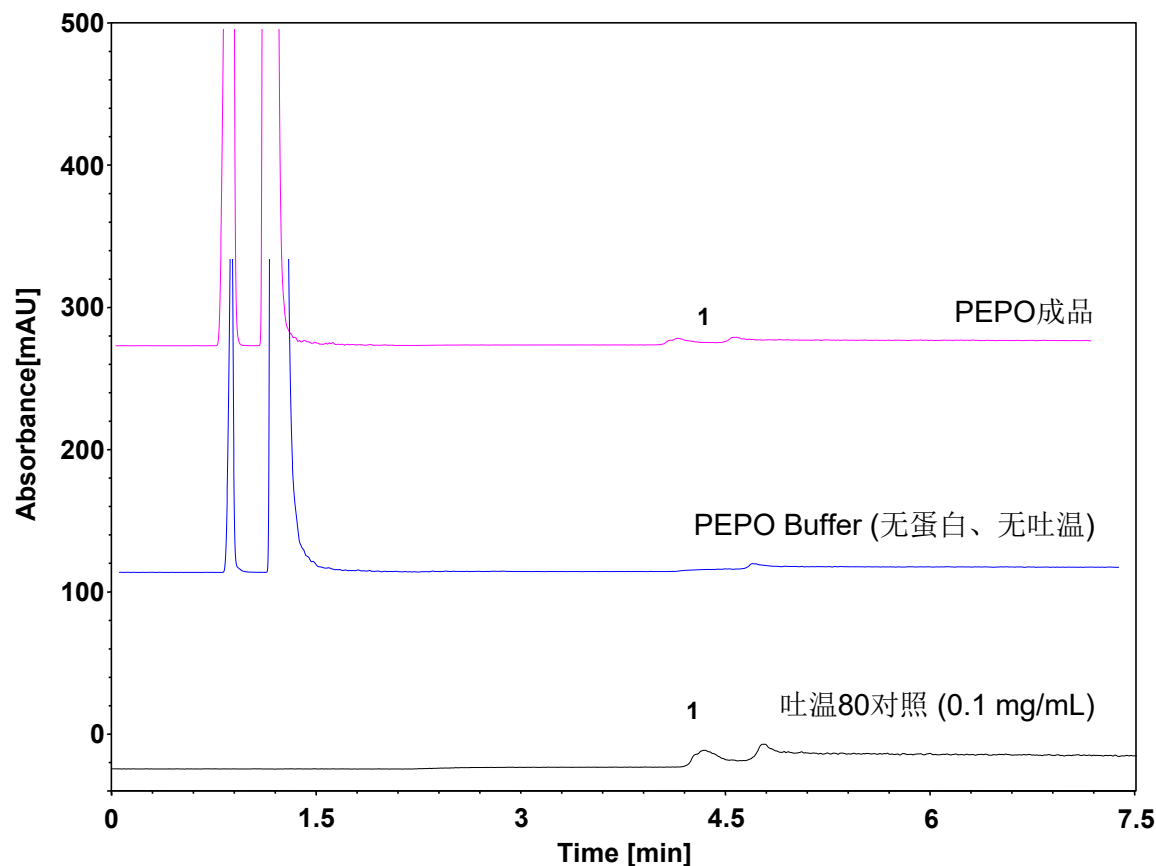


PEG化修饰重组蛋白中吐温80测定



Column: ChromCore SAA, 5 μ m
Dimension: 4.6 \times 150 mm
Mobile Phase: A) 0.1% 乙酸异丙醇溶液
B) 0.1% 乙酸水溶液
Gradient:

t(min)	%A	%B
0	10	90
0.1	10	90
0.2	34	66
2.6	34	66
2.7	100	0
6.7	100	0
6.8	10	90
15	10	90

Flow Rate: 1.2 mL/min
Temperature: 25 $^{\circ}$ C
Injection: 5 μ L
Detection: ELSD: Evap:65 $^{\circ}$ C, Neb:55 $^{\circ}$ C, Gas:1.6SLM
Instrument: Vanquish F
Sample: PEG化修饰重组蛋白
Peak: 1. 吐温80