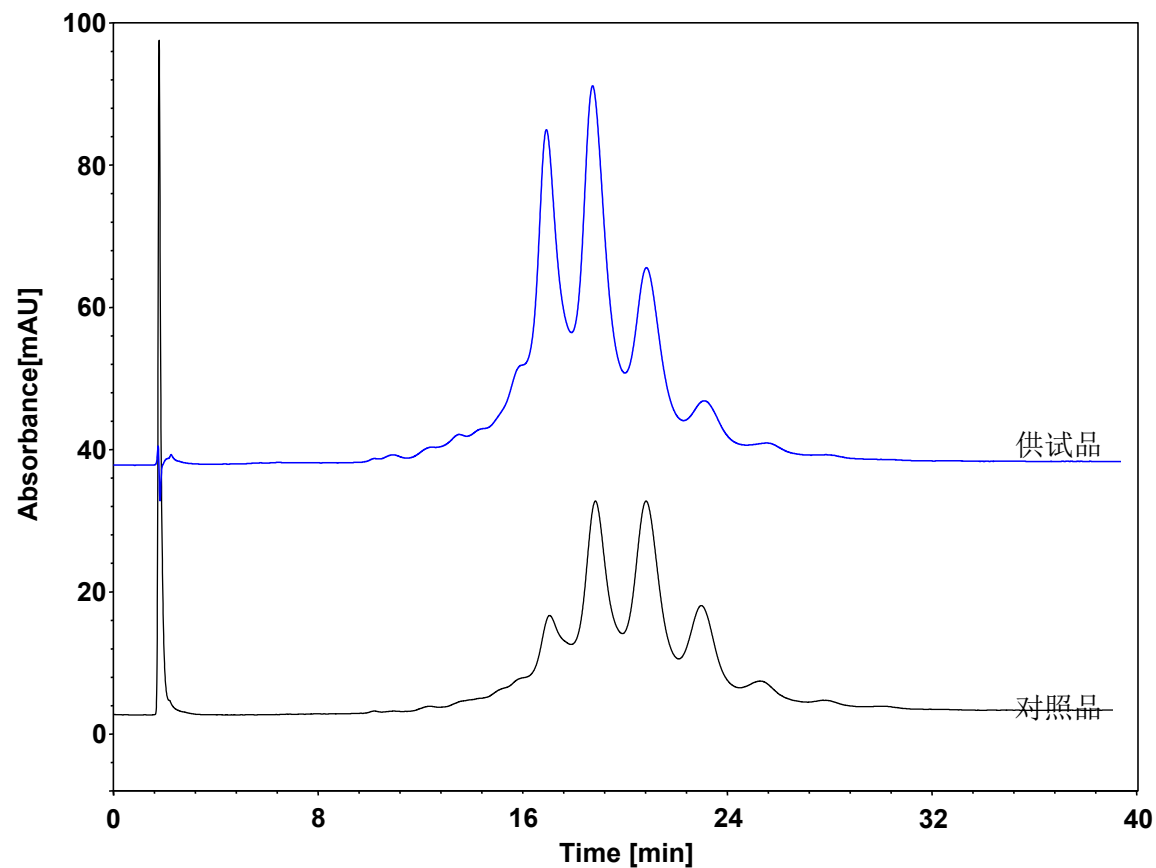


# IgG抗体

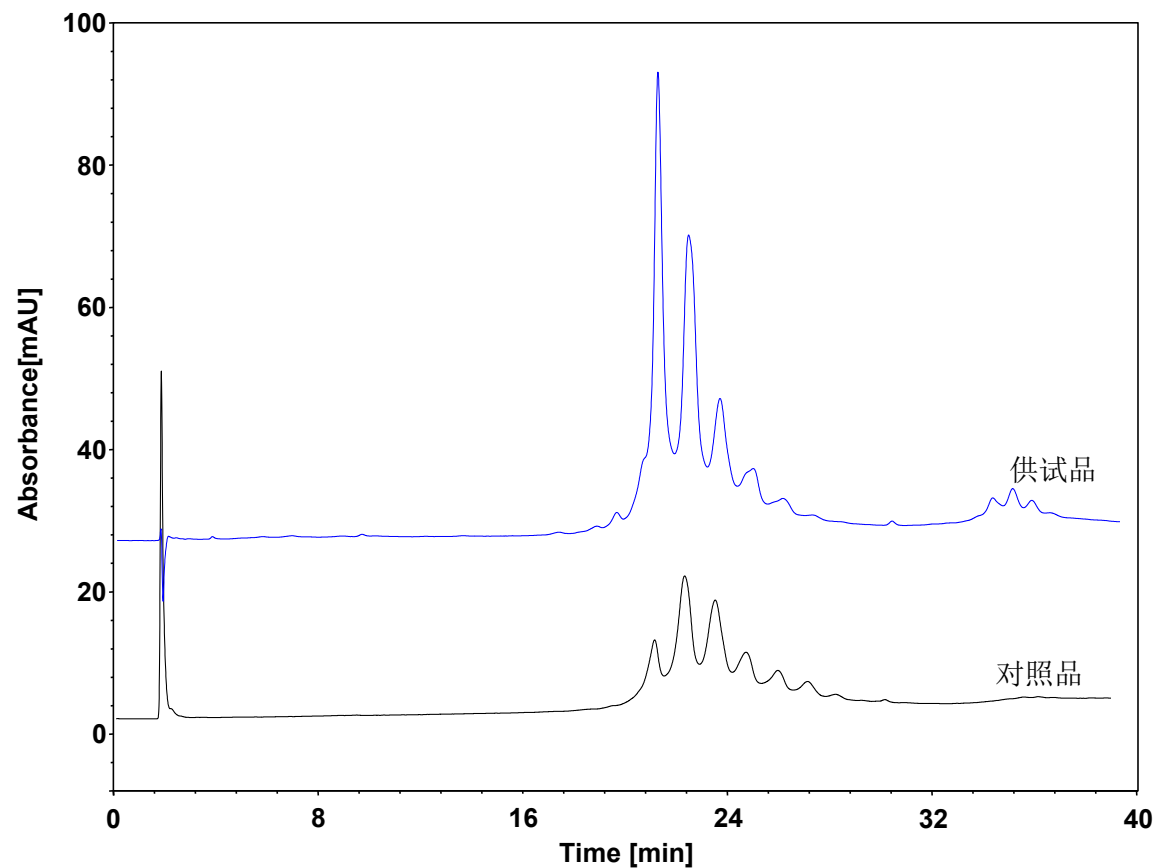


Column: BioCore SAX, 10  $\mu$ m  
Dimension: 4.6  $\times$  150 mm  
Mobile Phase: A) 20 mM Tris, pH8.5  
B) 500 mM NaCl in 20 mM Tris, pH8.5  
Gradient: 

t(min)	%A	%B
0	78	22
40	72	28
40.1	0	100
45	0	100
45.1	78	22
65	78	22

  
Flow Rate: 0.5 mL/min  
Temperature: 30  $^{\circ}$ C  
Injection: 5  $\mu$ L  
Detection: UV 214 nm  
Samples: 抗体13标准品 (2 mg/mL)  
抗体13供试品 (4.35 mg/mL)

# IgG抗体



Column: BioCore SAX, 10  $\mu$ m  
Dimension: 4.6  $\times$  150 mm  
Mobile Phase: A) 20 mM Tris, pH8.5  
B) 500 mM NaCl in 20 mM Tris, pH8.5  
Gradient: 

t(min)	%A	%B
0	90	10
40	70	30
40.1	0	100
45	0	100
45.1	90	10
65	90	10

  
Flow Rate: 0.5 mL/min  
Temperature: 30  $^{\circ}$ C  
Injection: 5  $\mu$ L  
Detection: UV 214 nm  
Samples: 抗体30标准品(1.4 mg/mL)  
抗体30供试品(3.25 mg/mL)