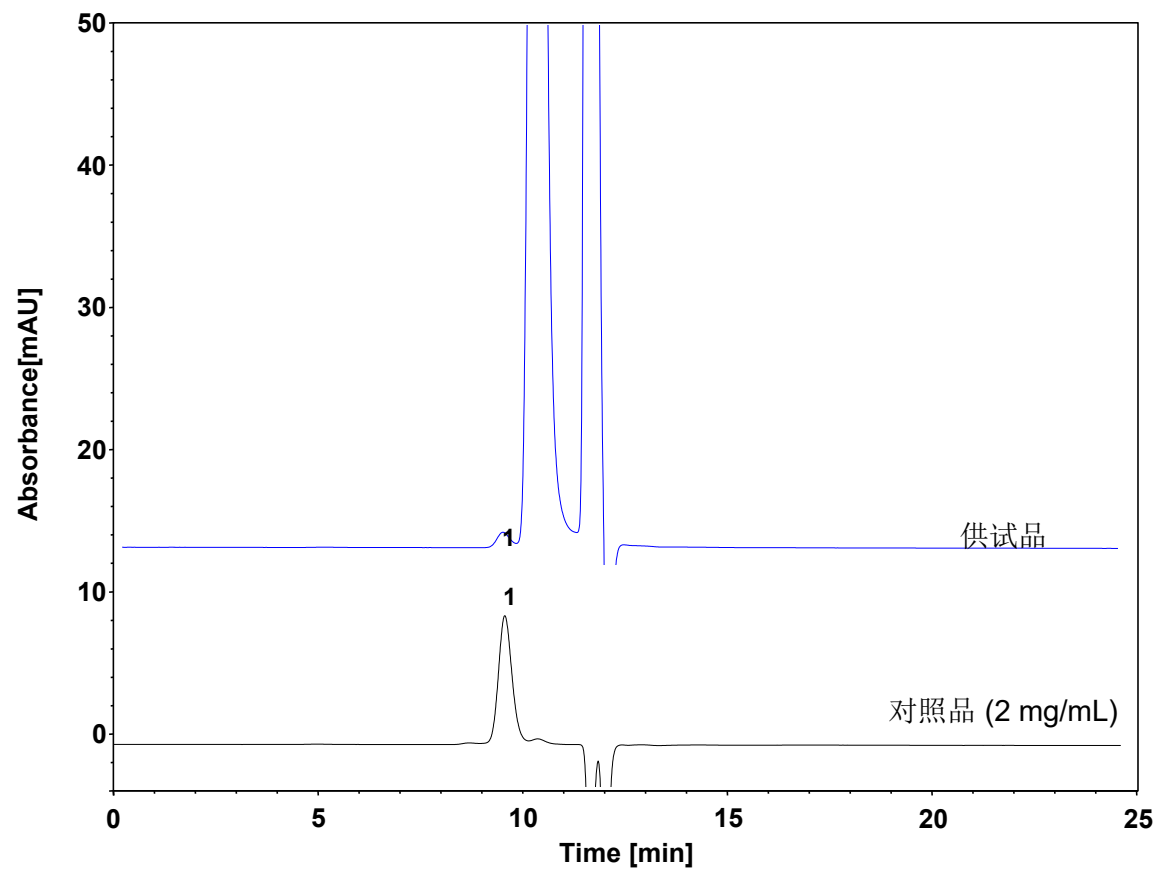


# 蛋白中帕洛沙姆(SEC)



Column: BioCore SEC-300, 5  $\mu$ m  
Dimension: 7.8  $\times$  300 mm  
Mobile Phase: 10 mM ammonium acetate solution, pH4.0  
Flow Rate: 1.0 mL/min  
Temperature: 25  $^{\circ}$ C  
Injection: 10  $\mu$ L  
Detection: RID  
Sample: 帕洛沙姆 (1 mg/mL)